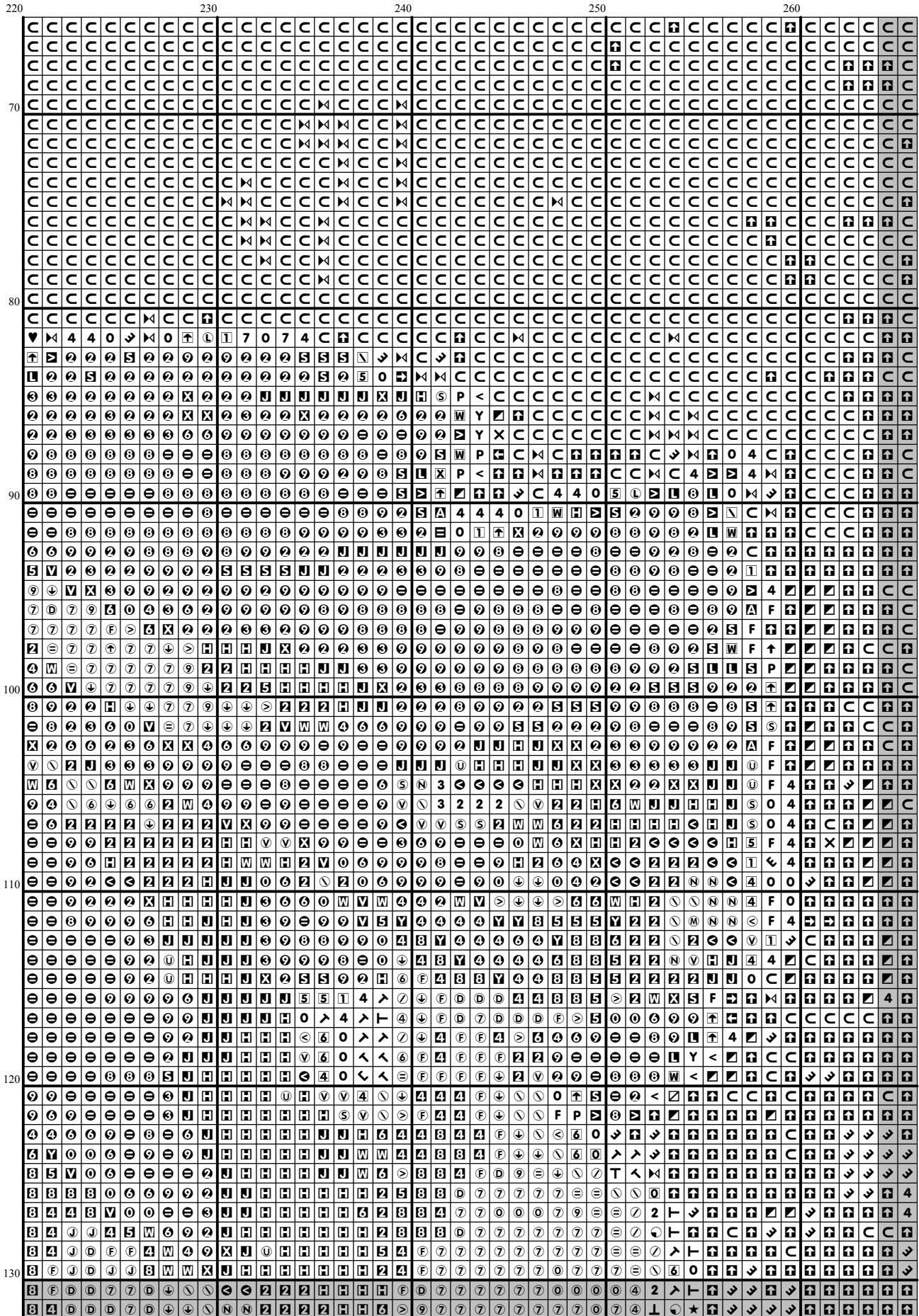
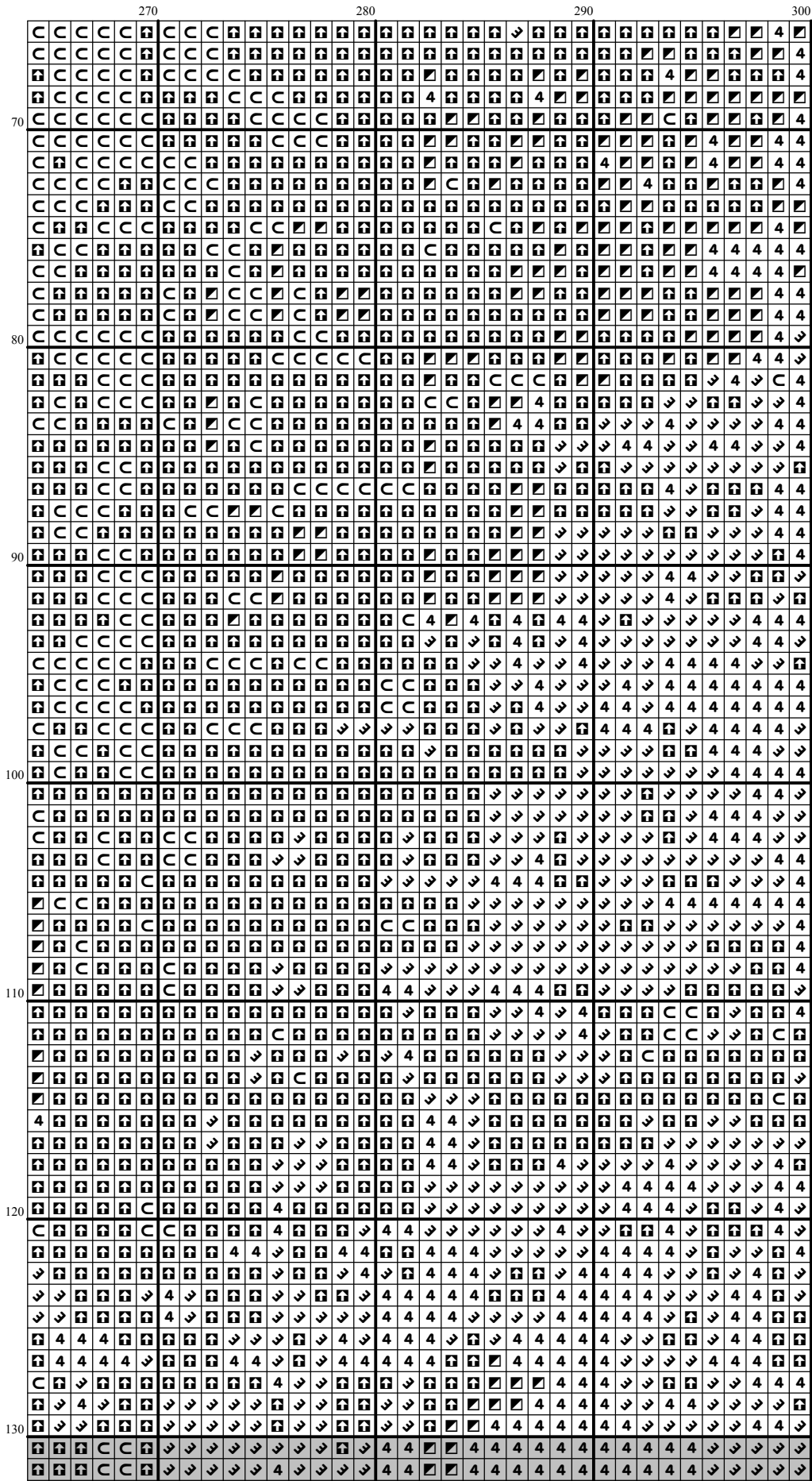
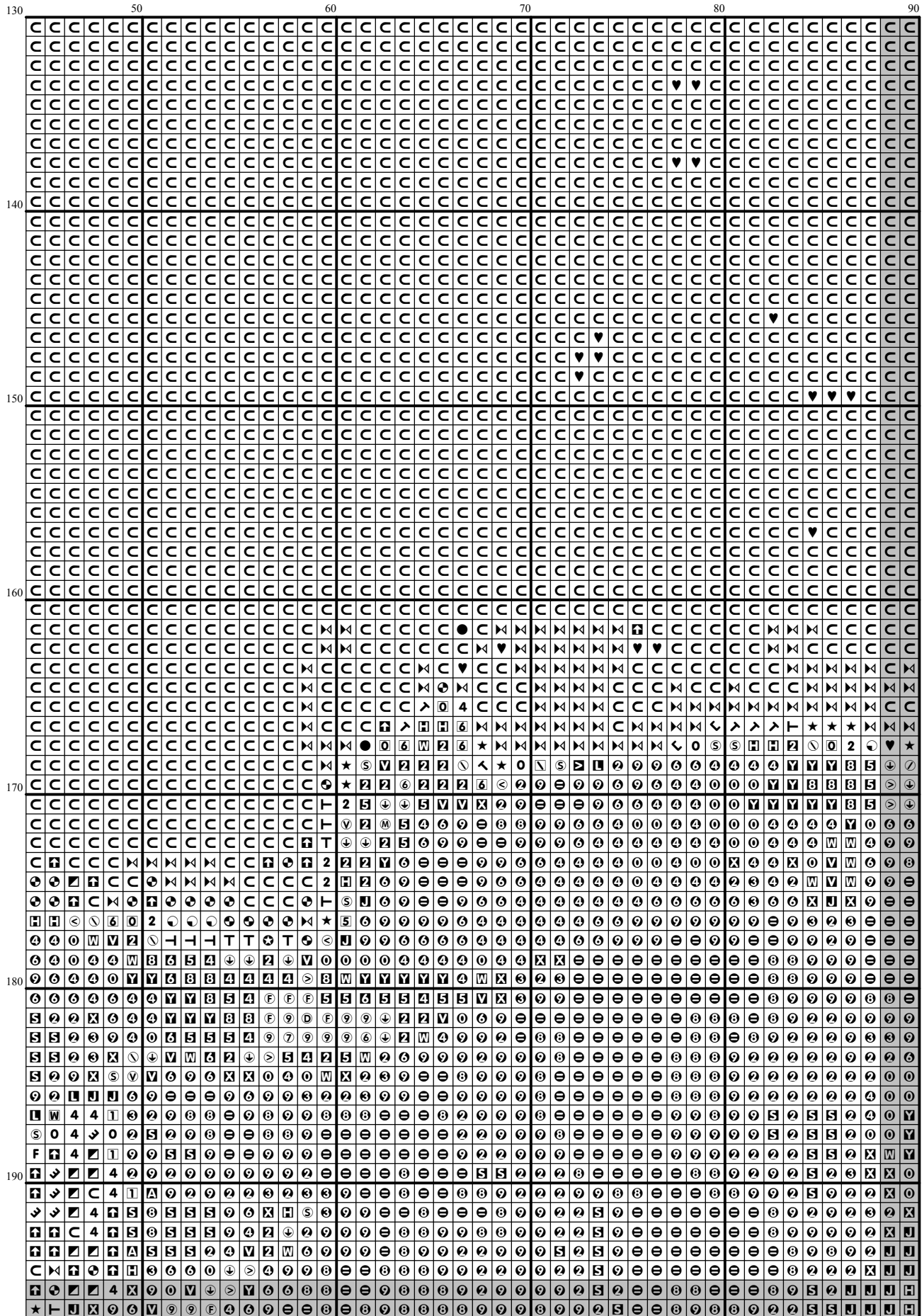


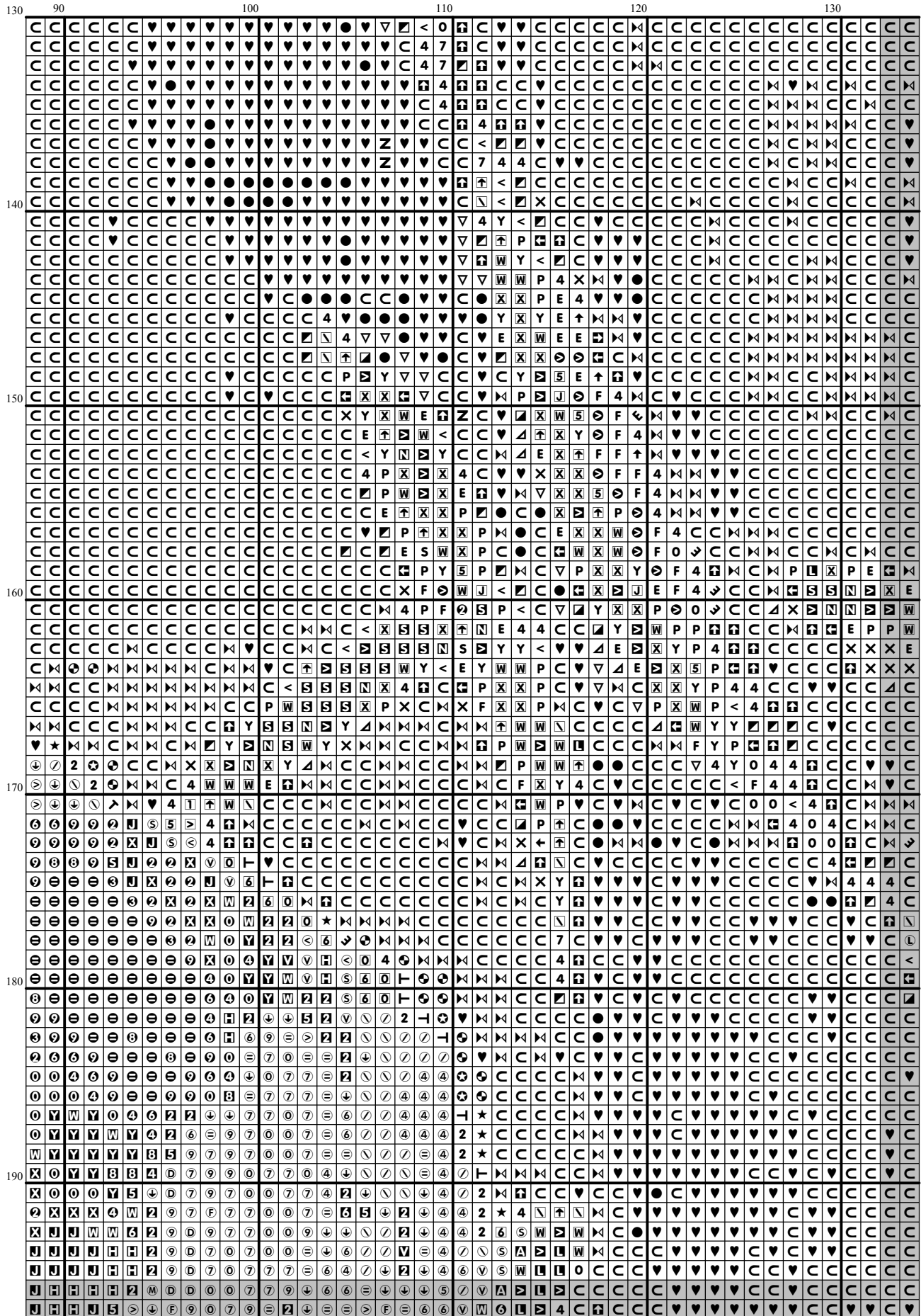
[illegible]



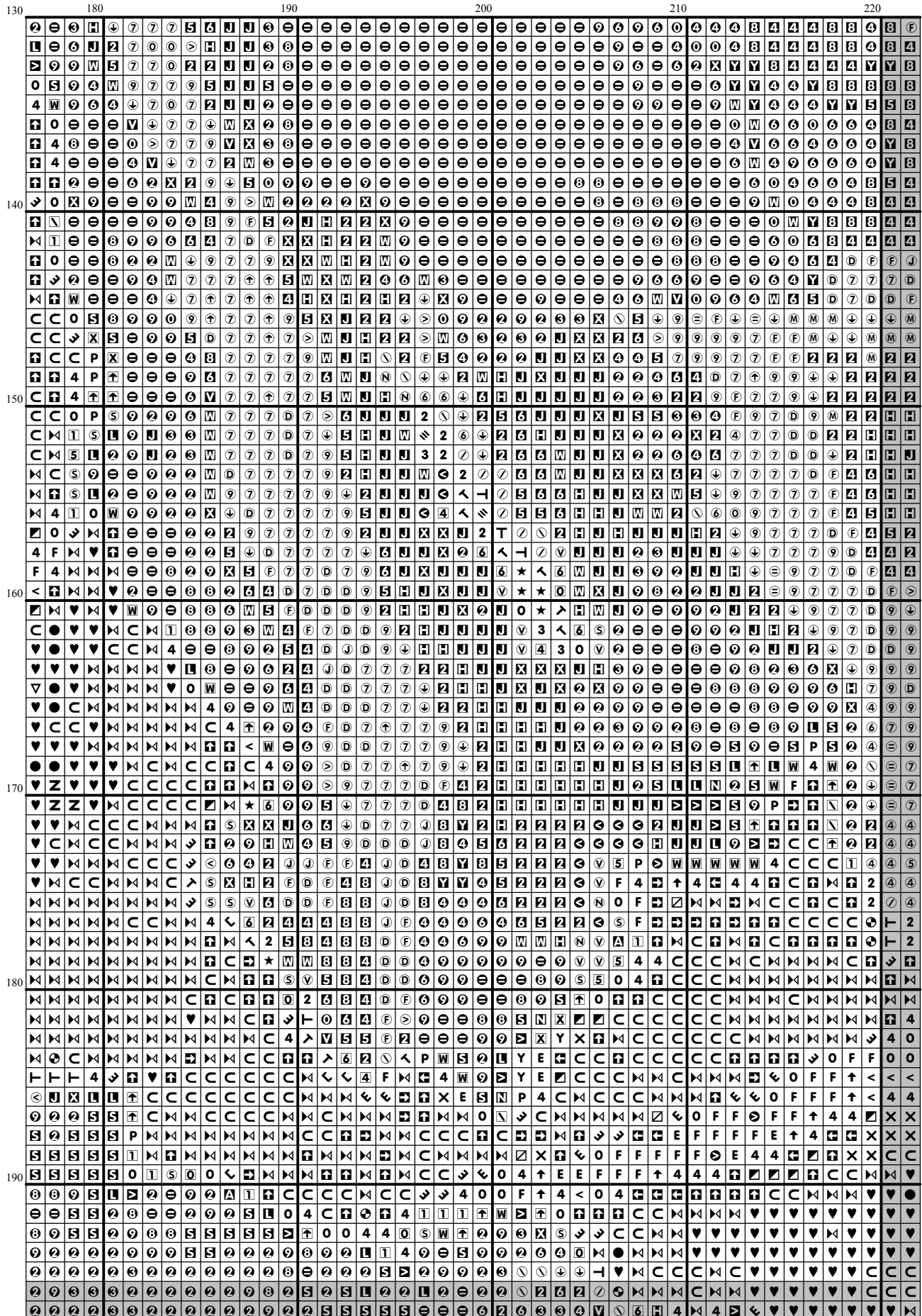


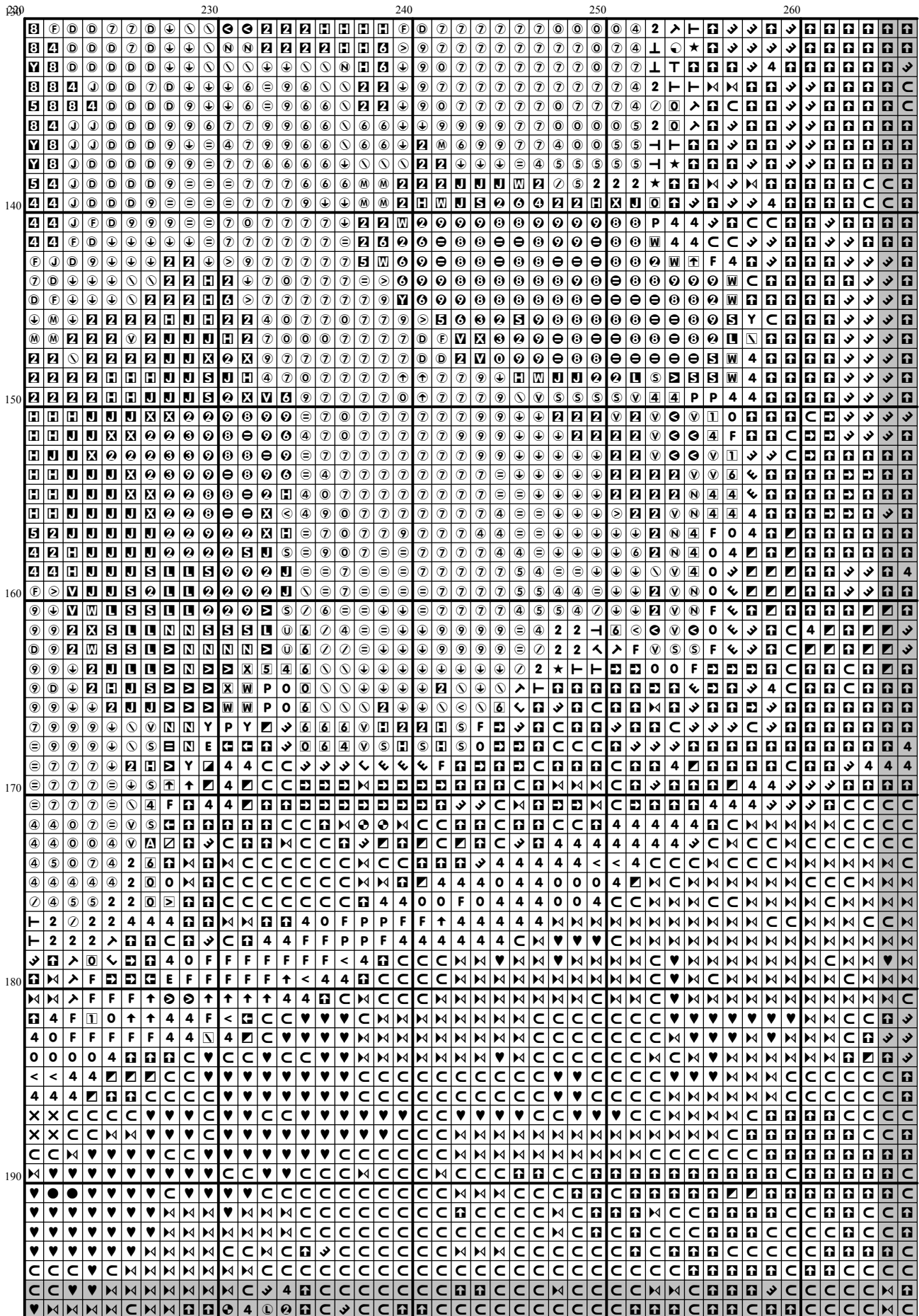
[illegible]

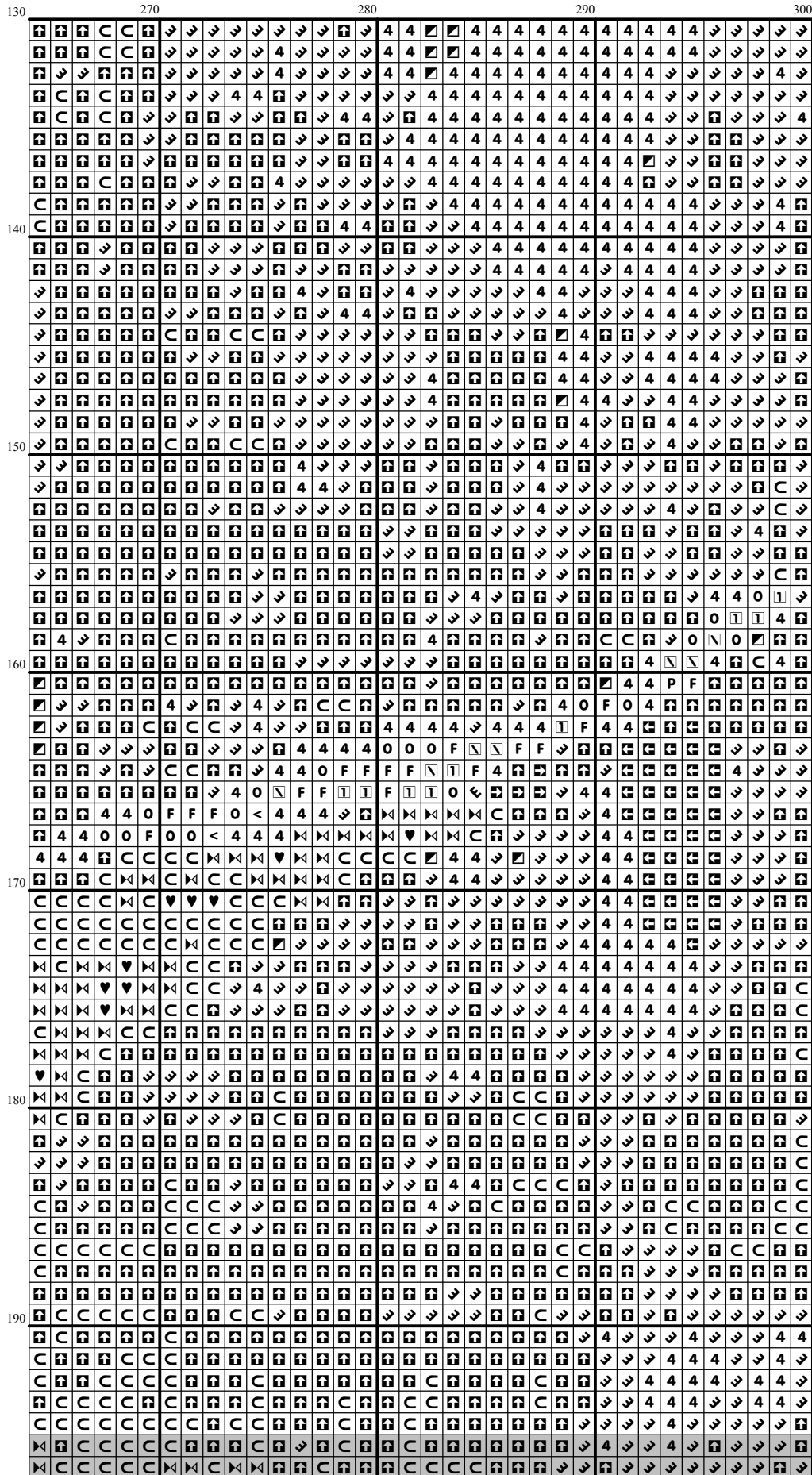


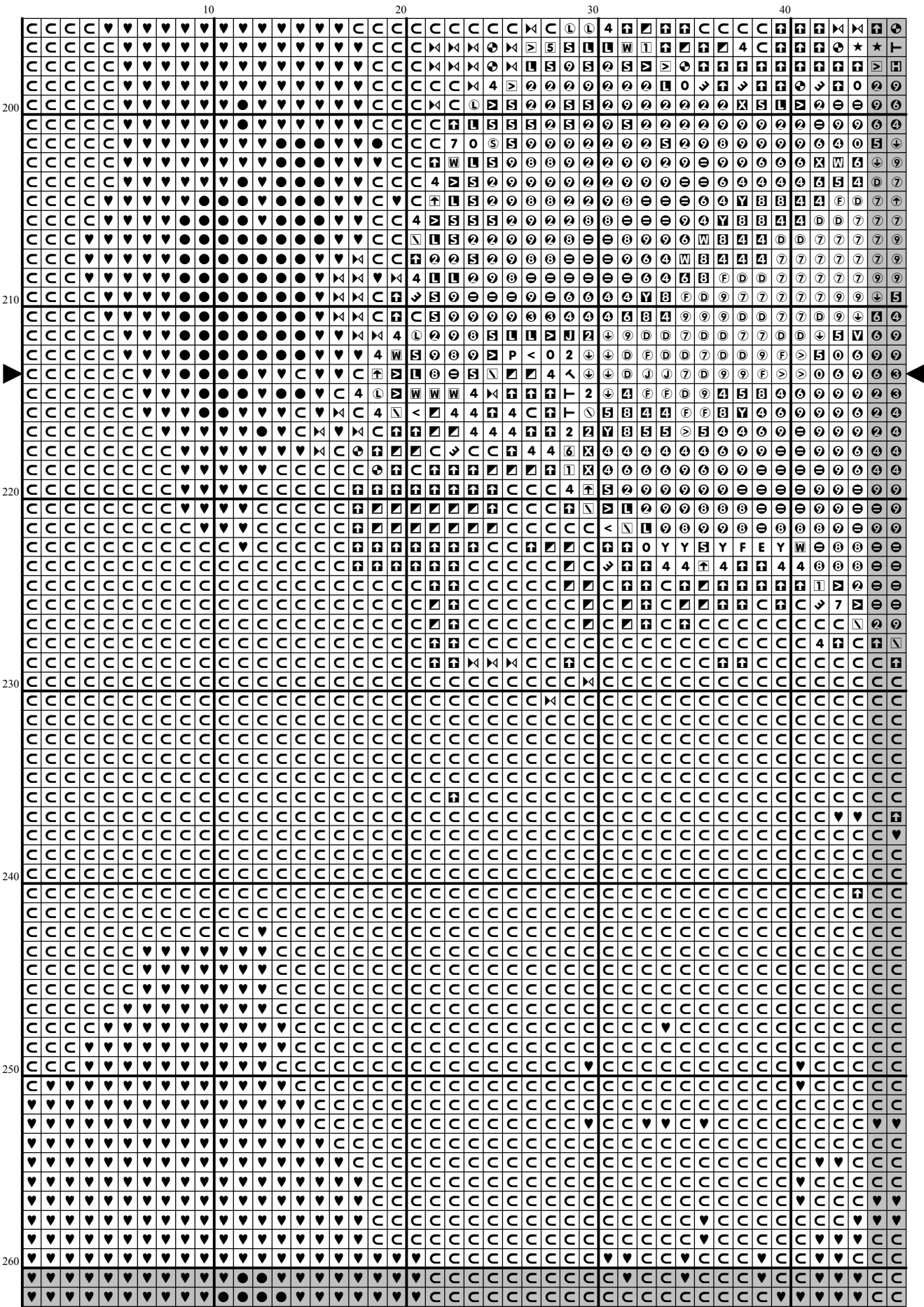


[illegible]

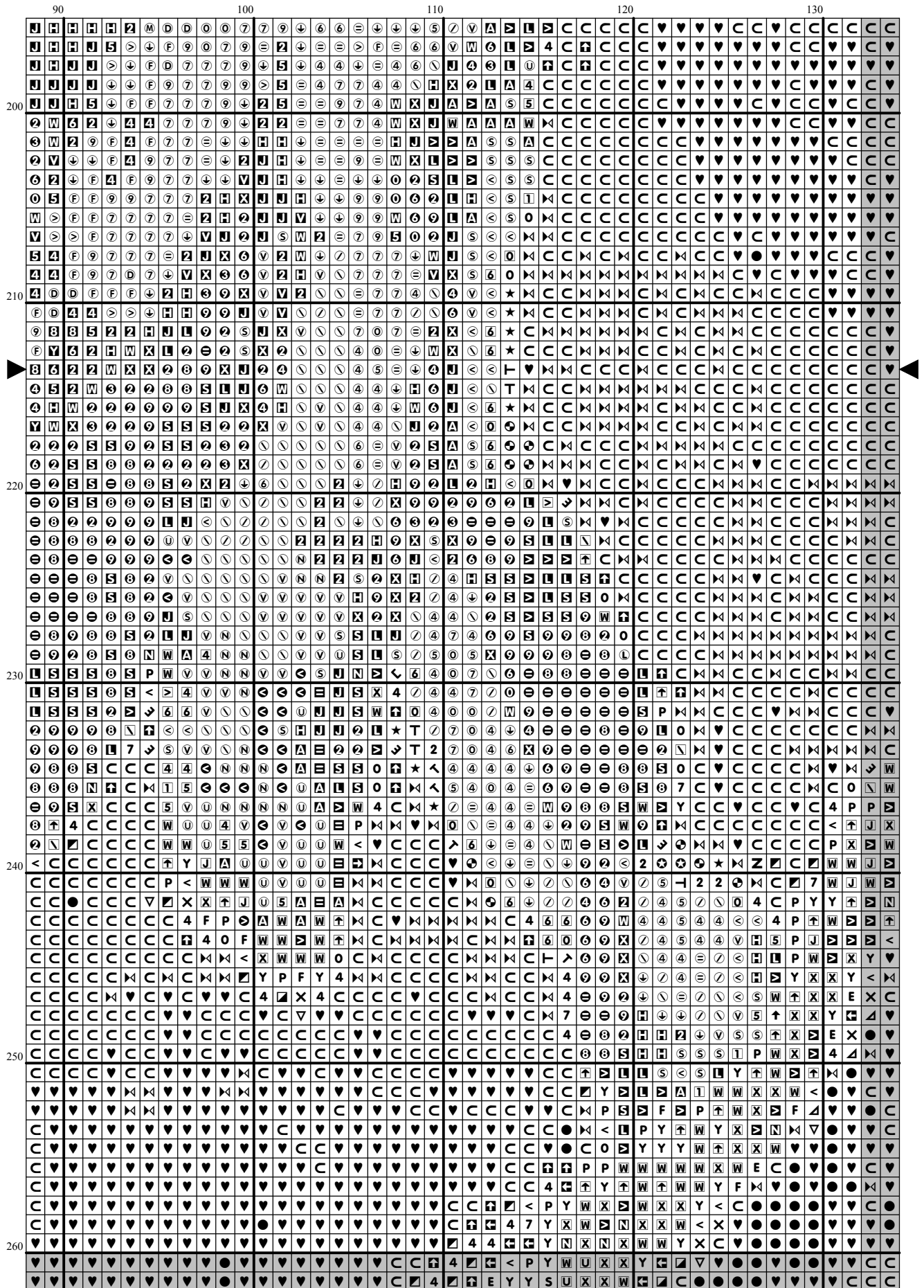


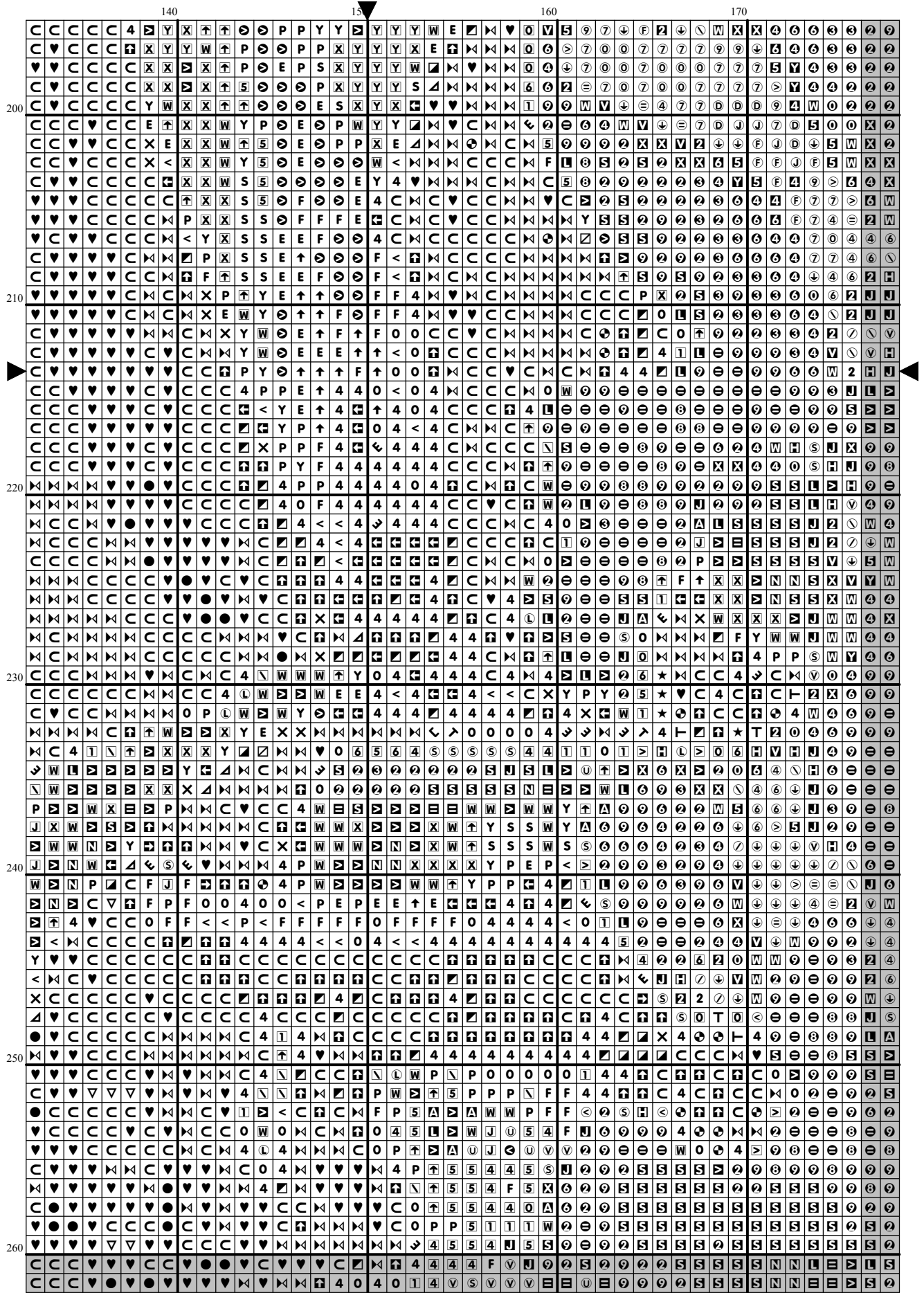


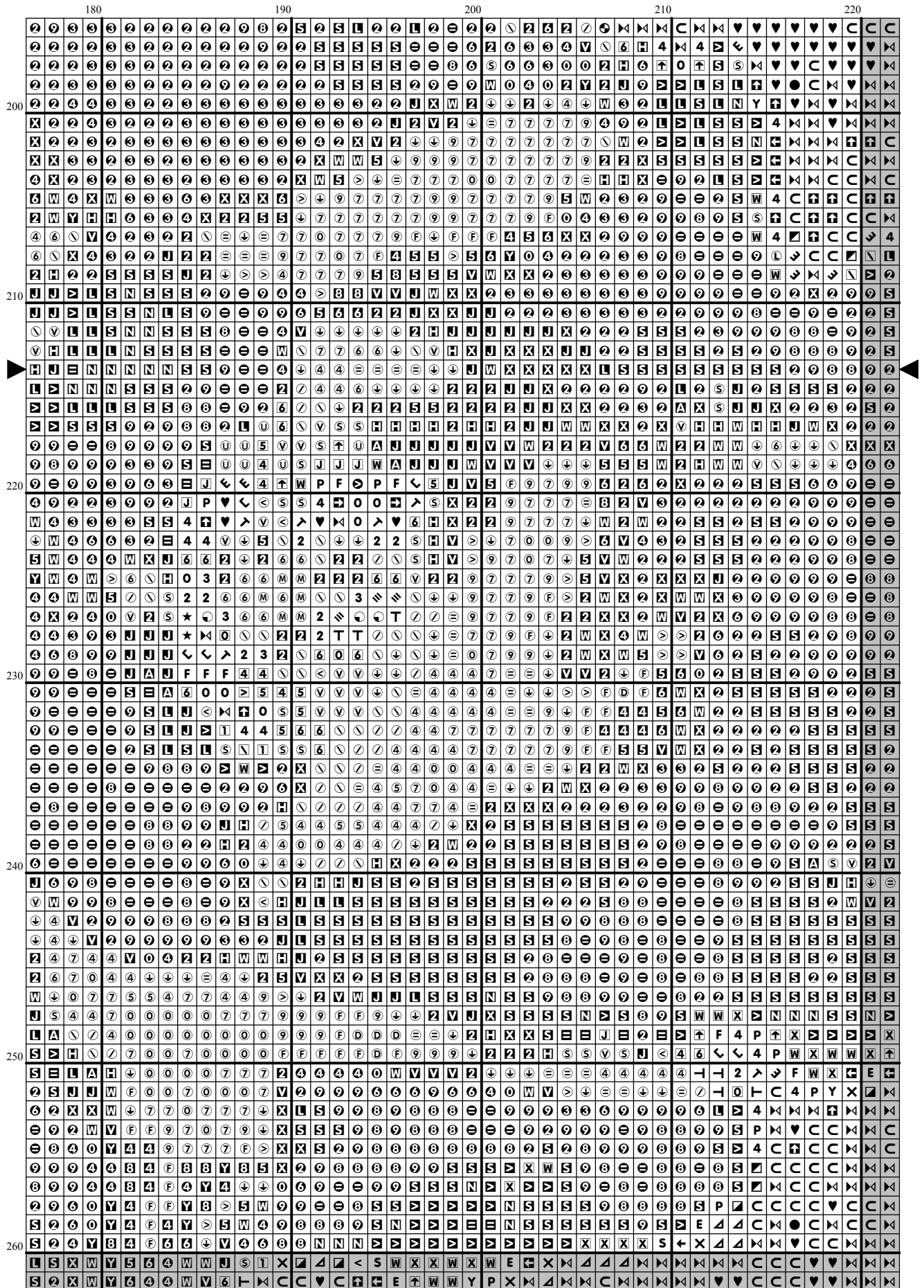


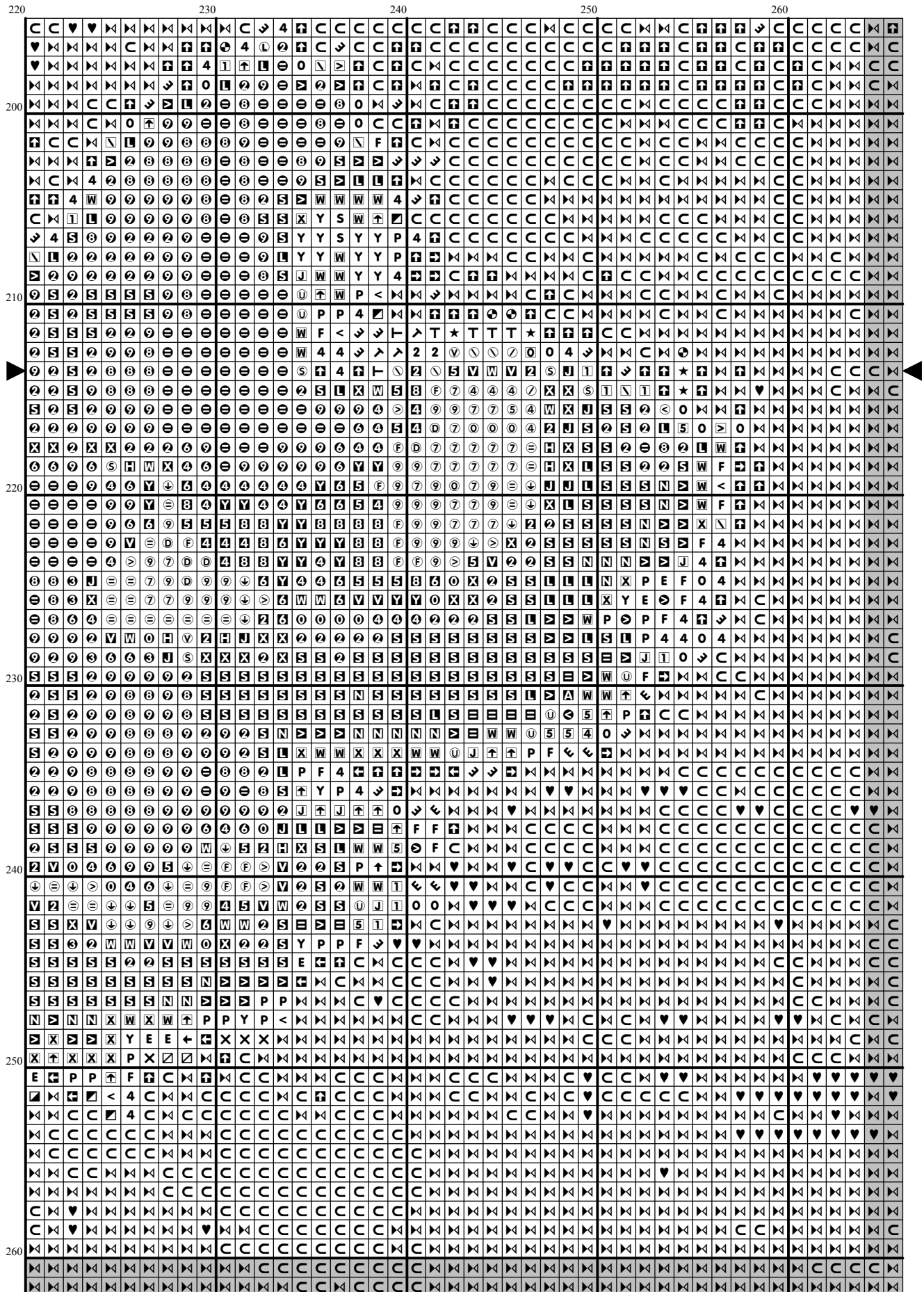


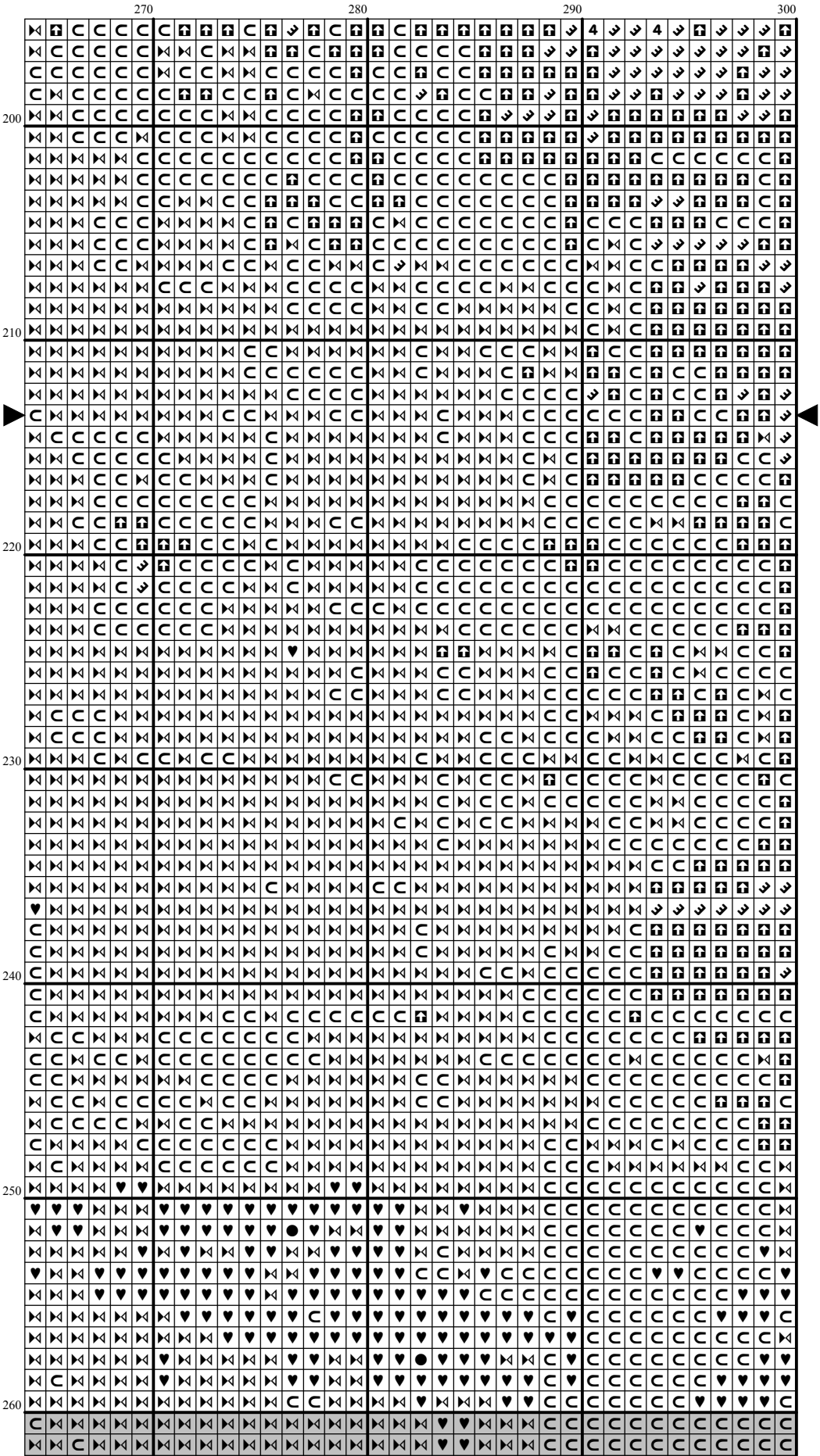
[illegible]

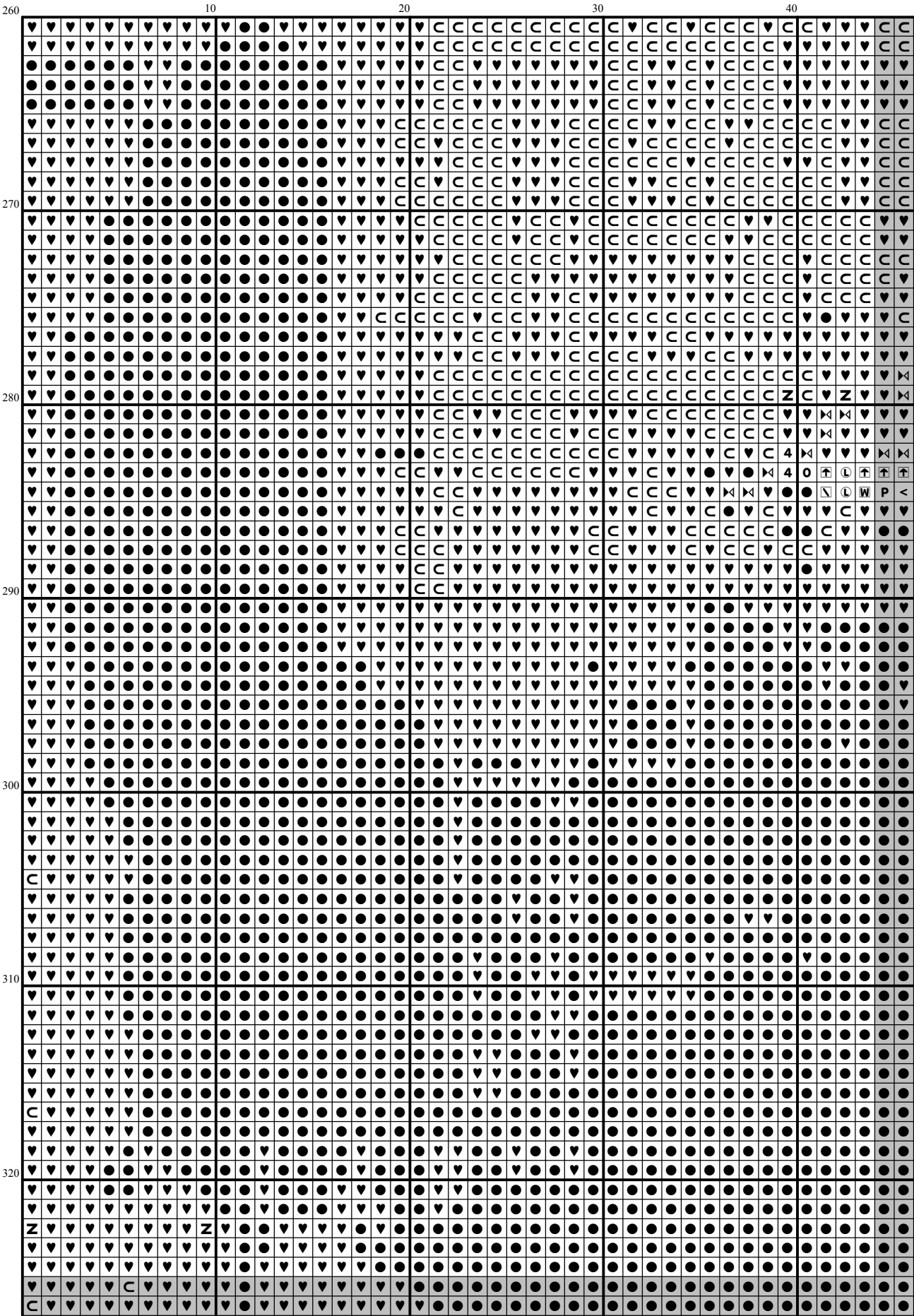




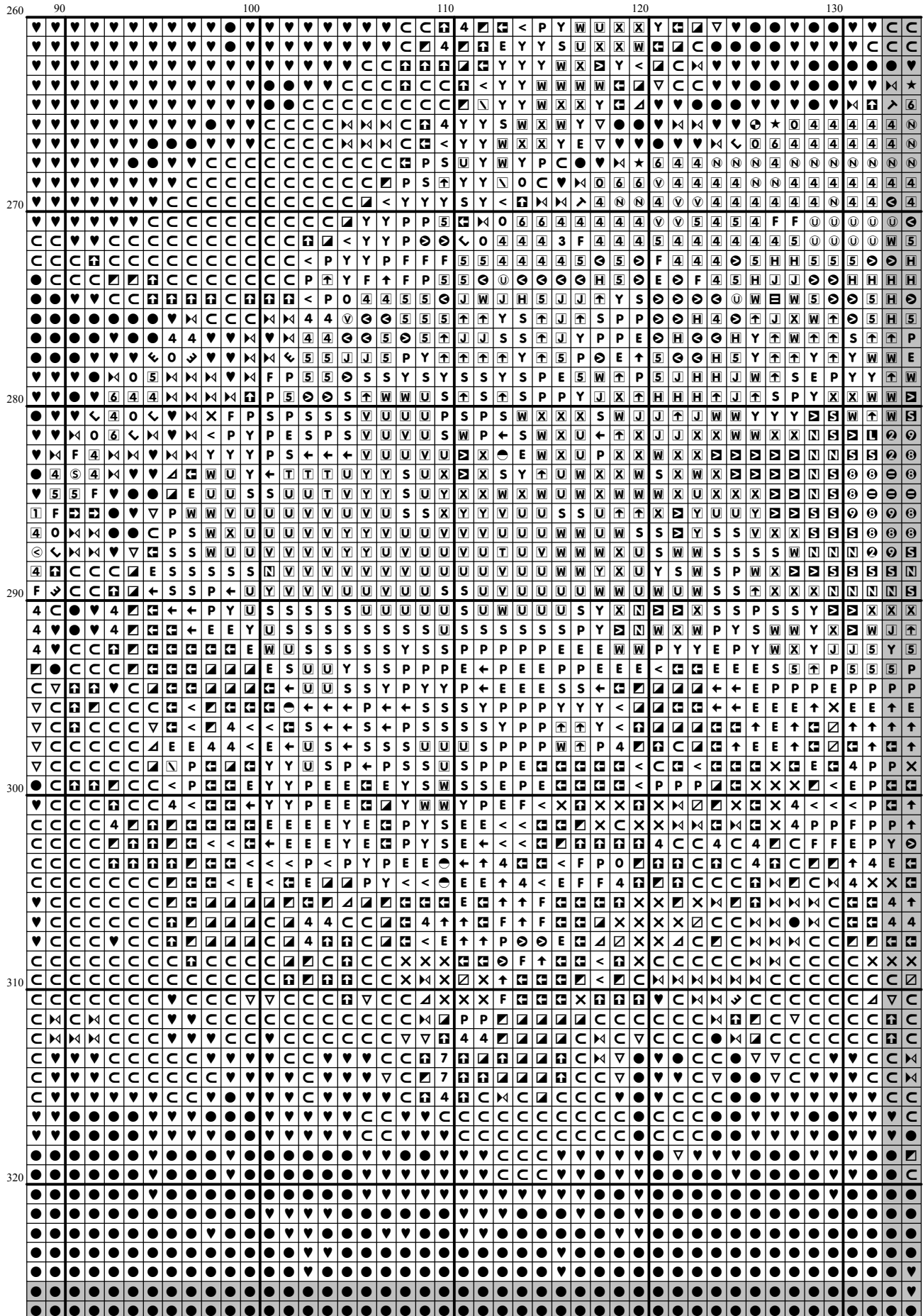


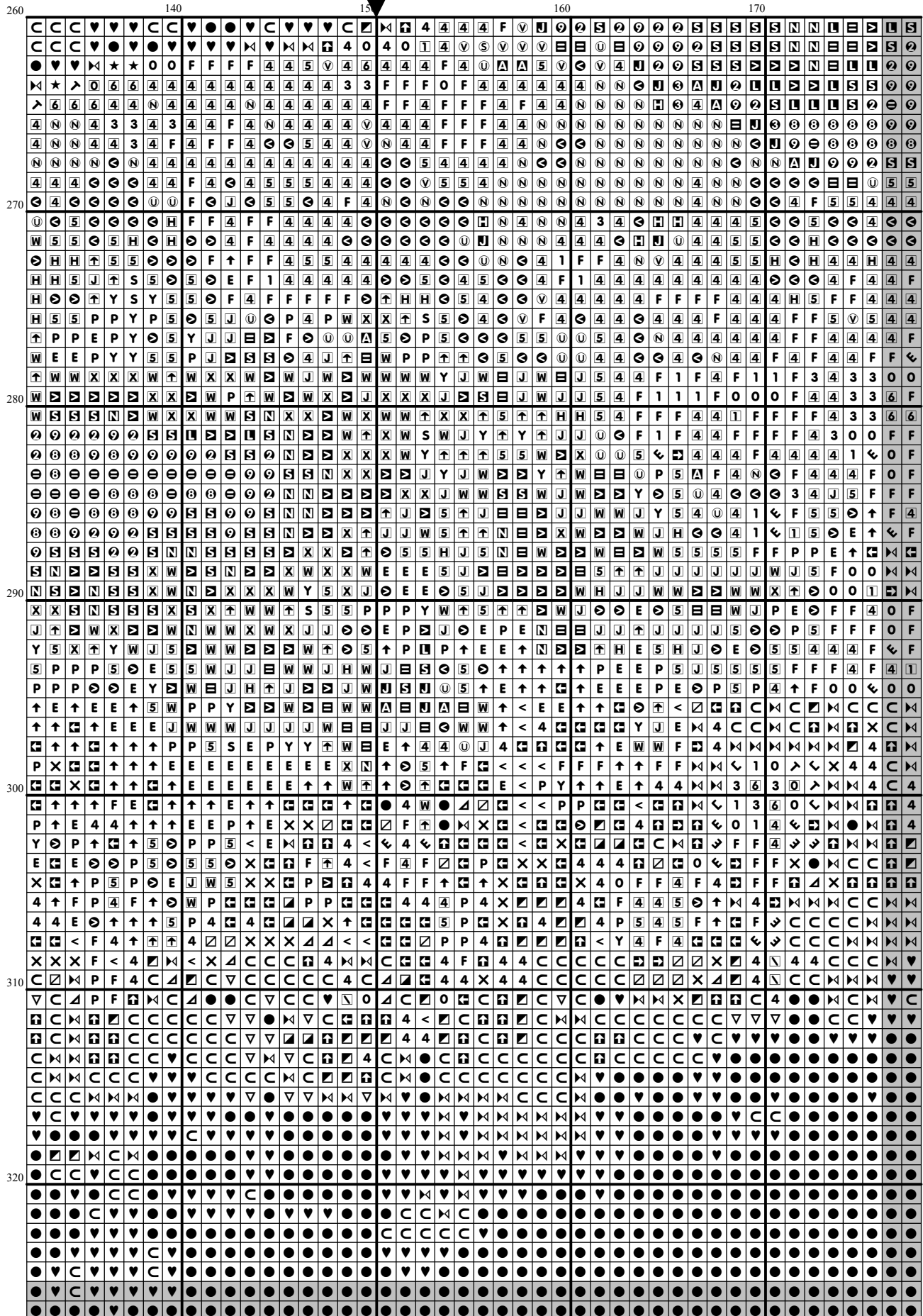


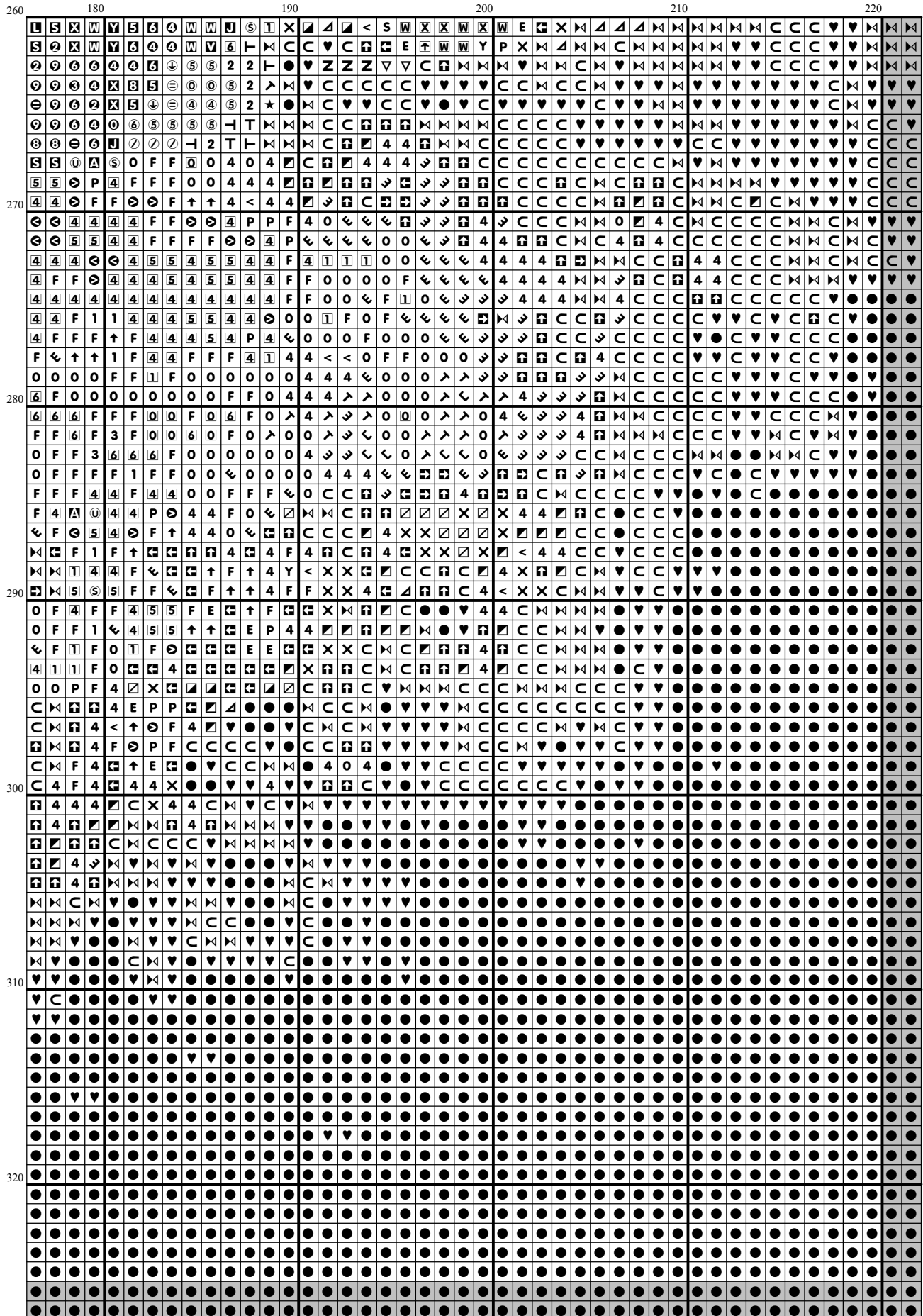


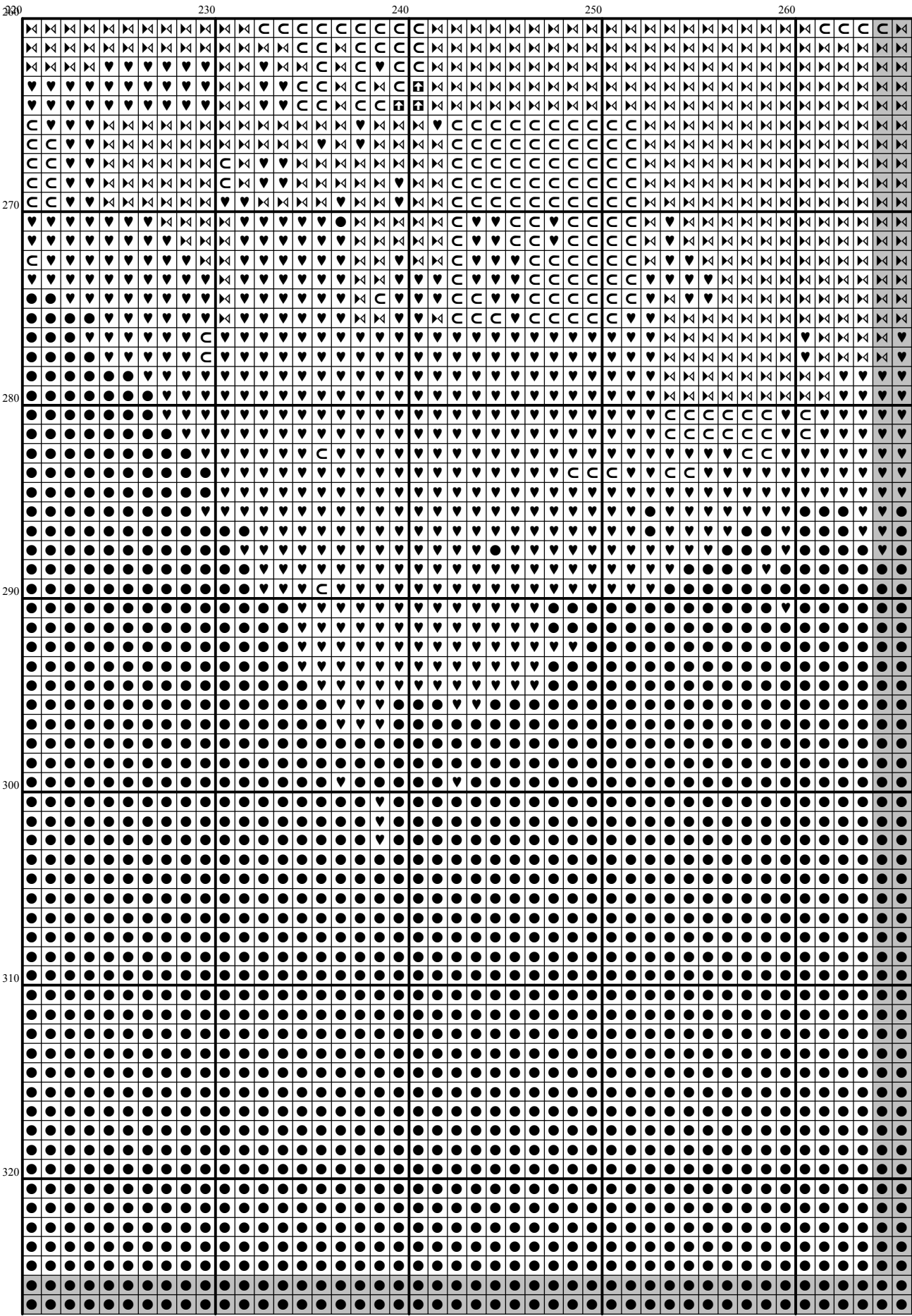


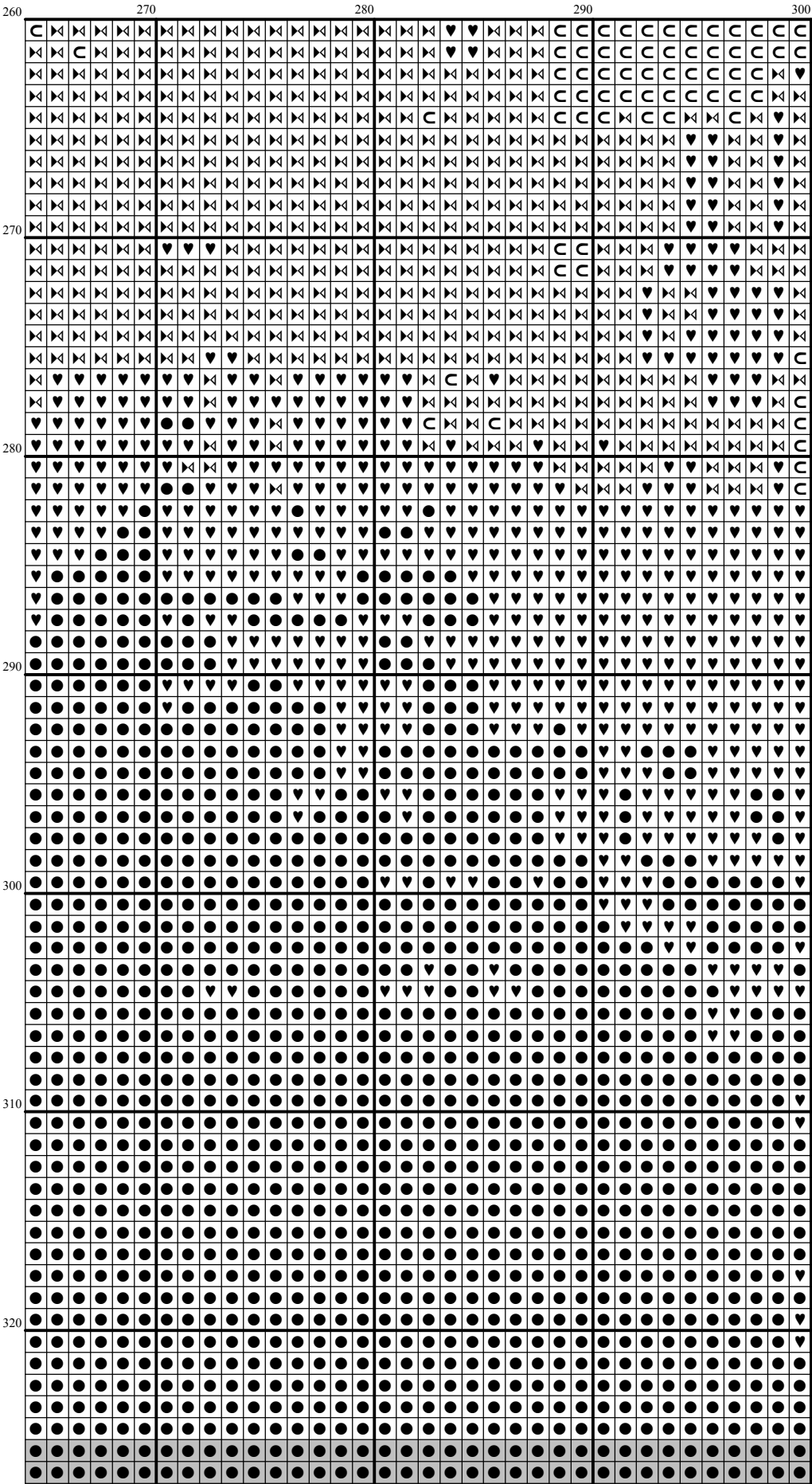
[illegible]

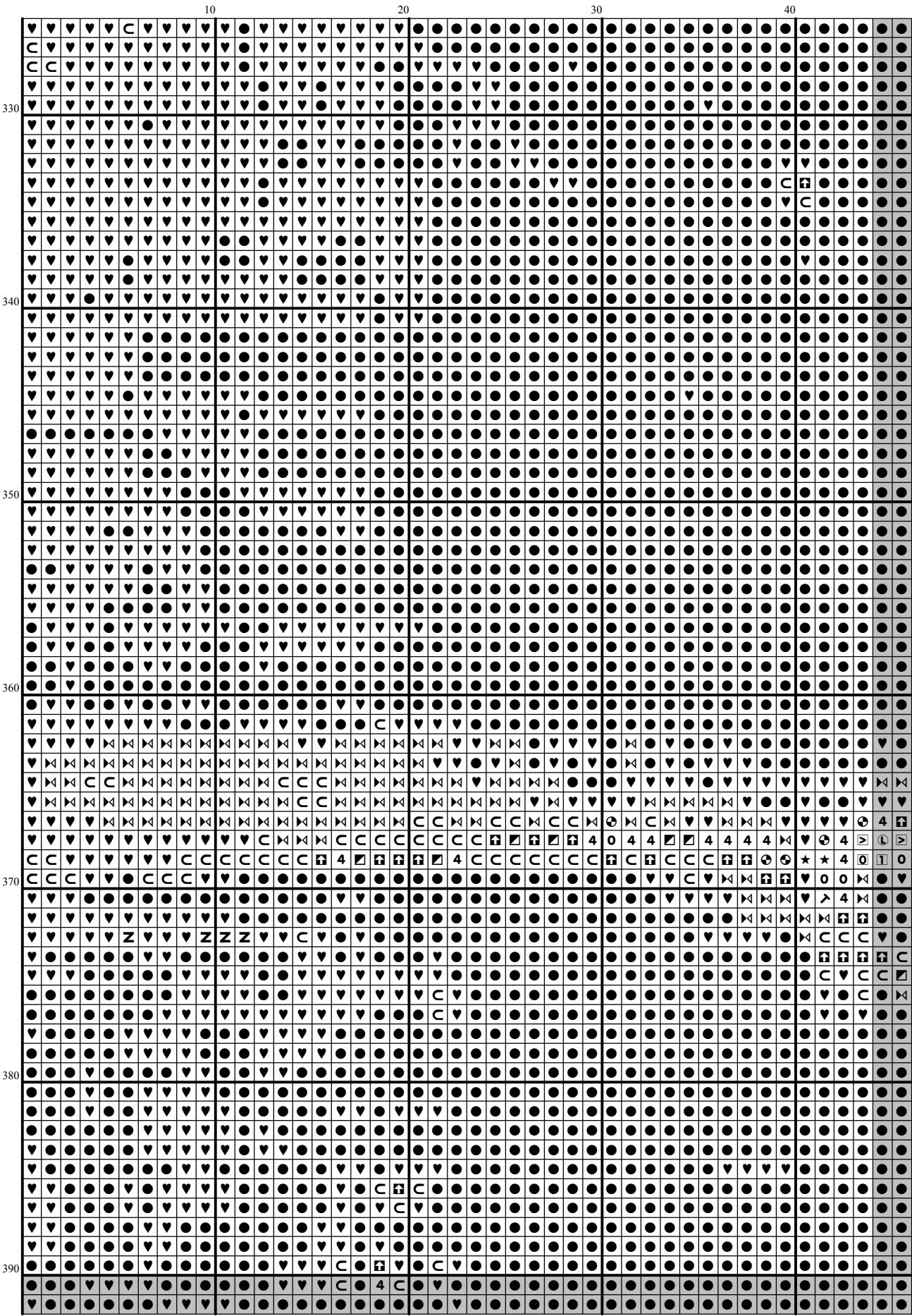


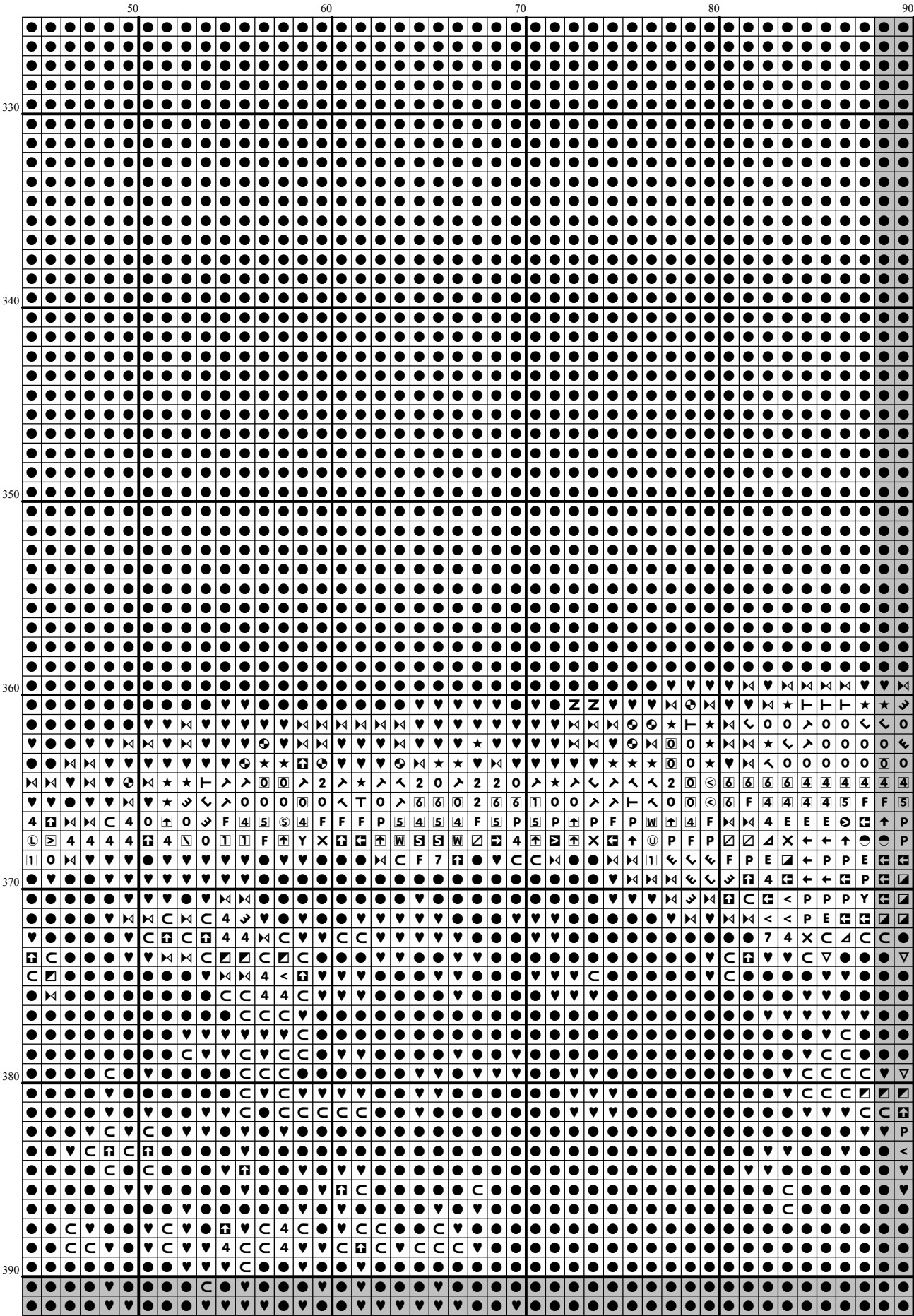


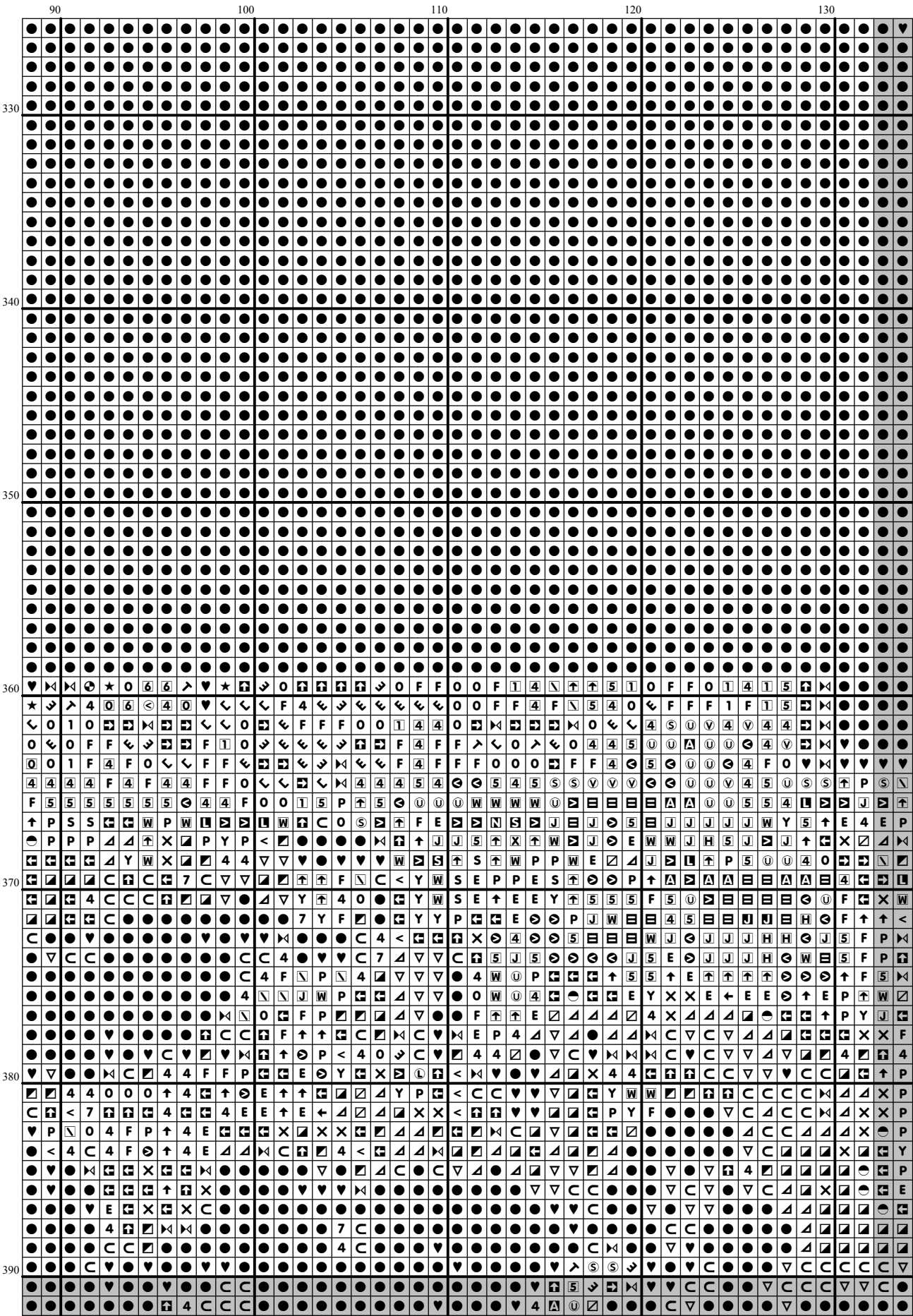


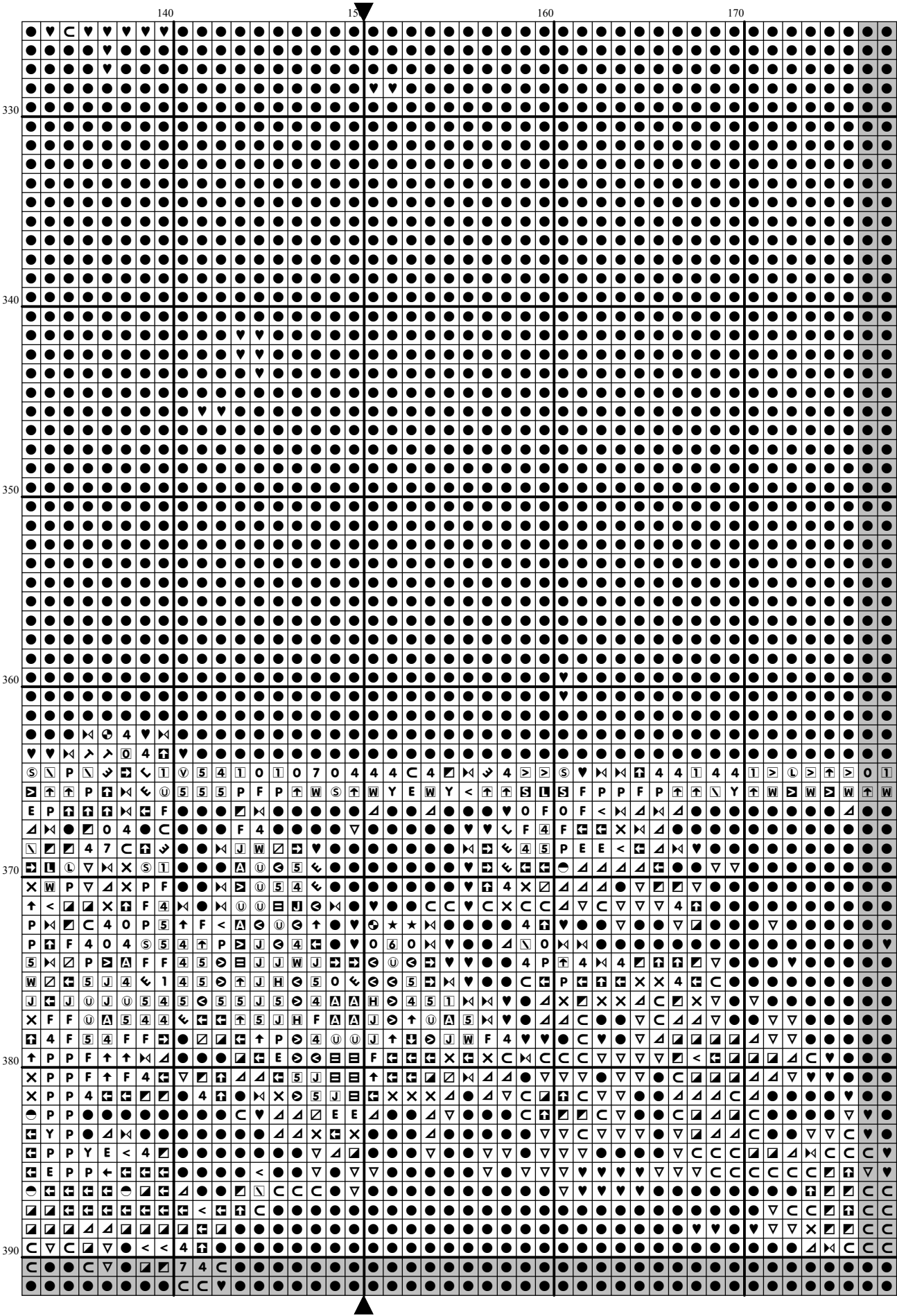


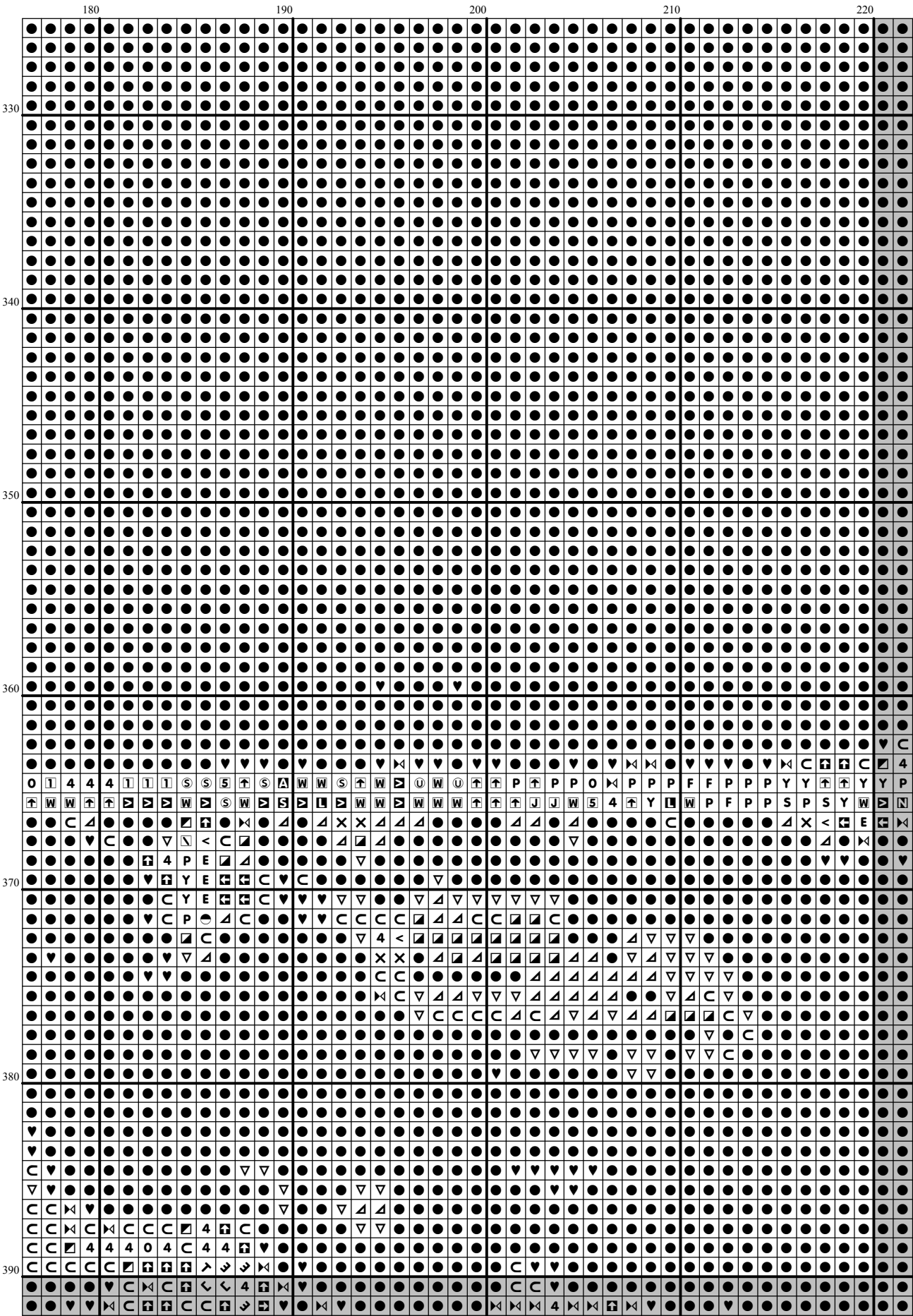


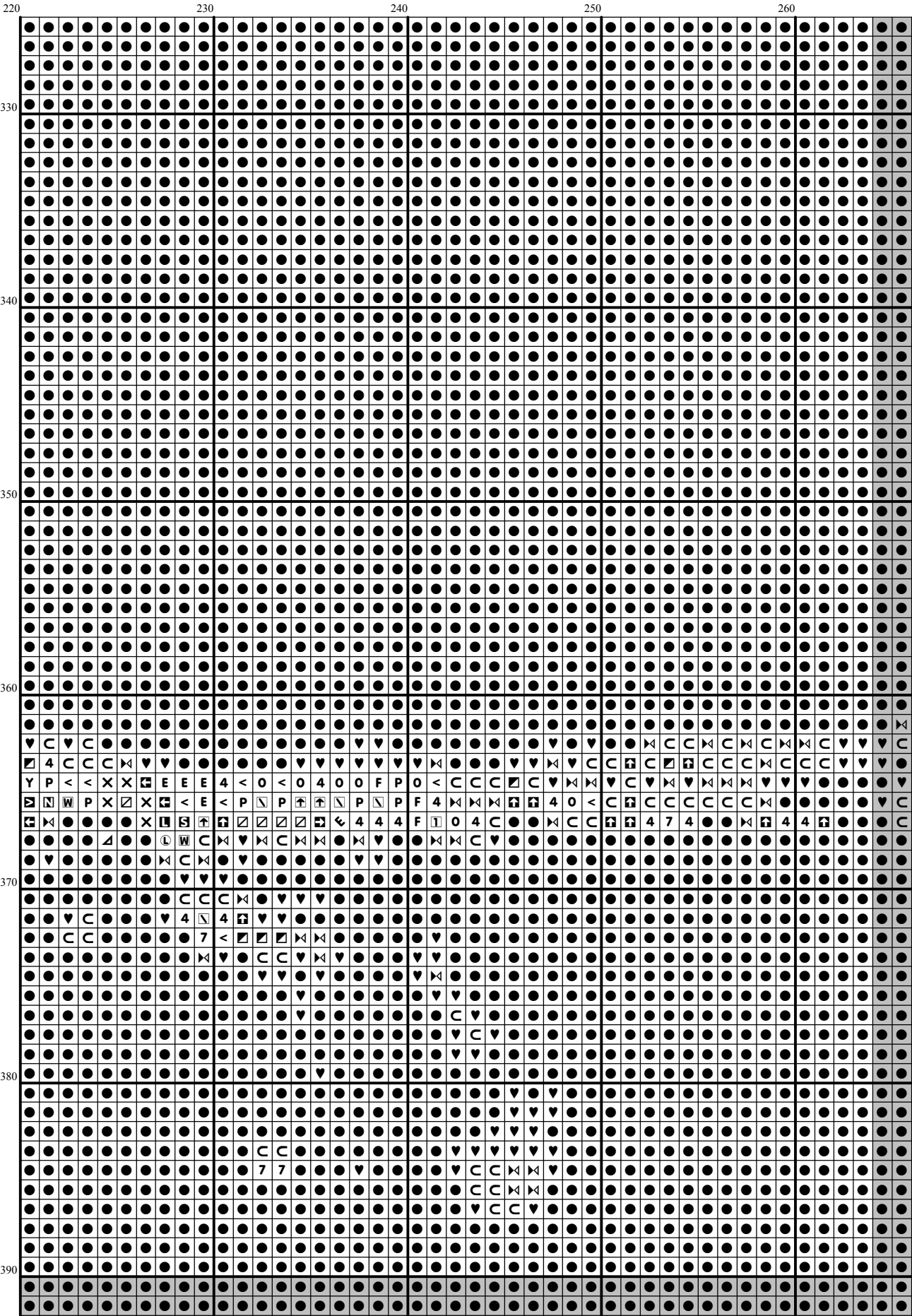


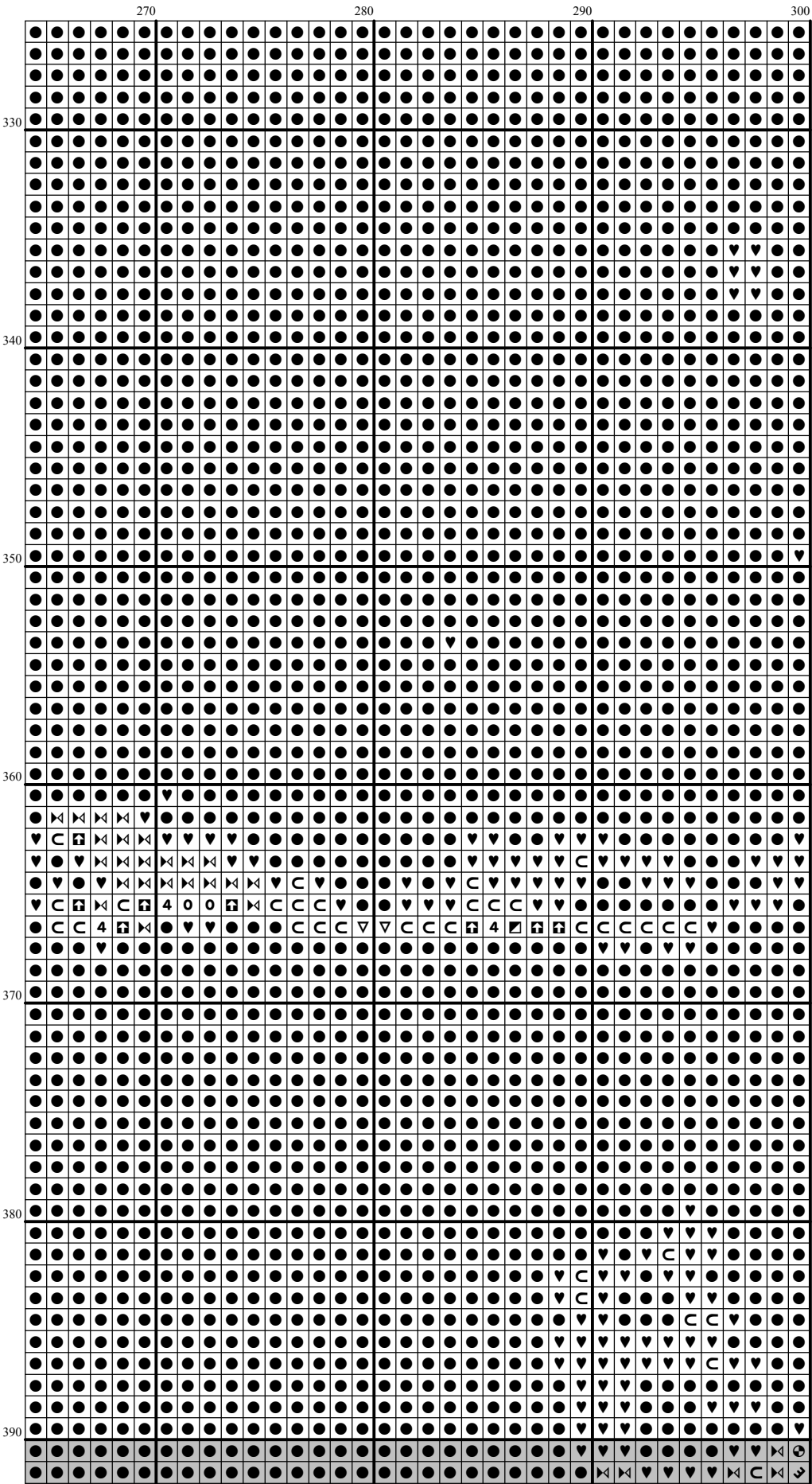


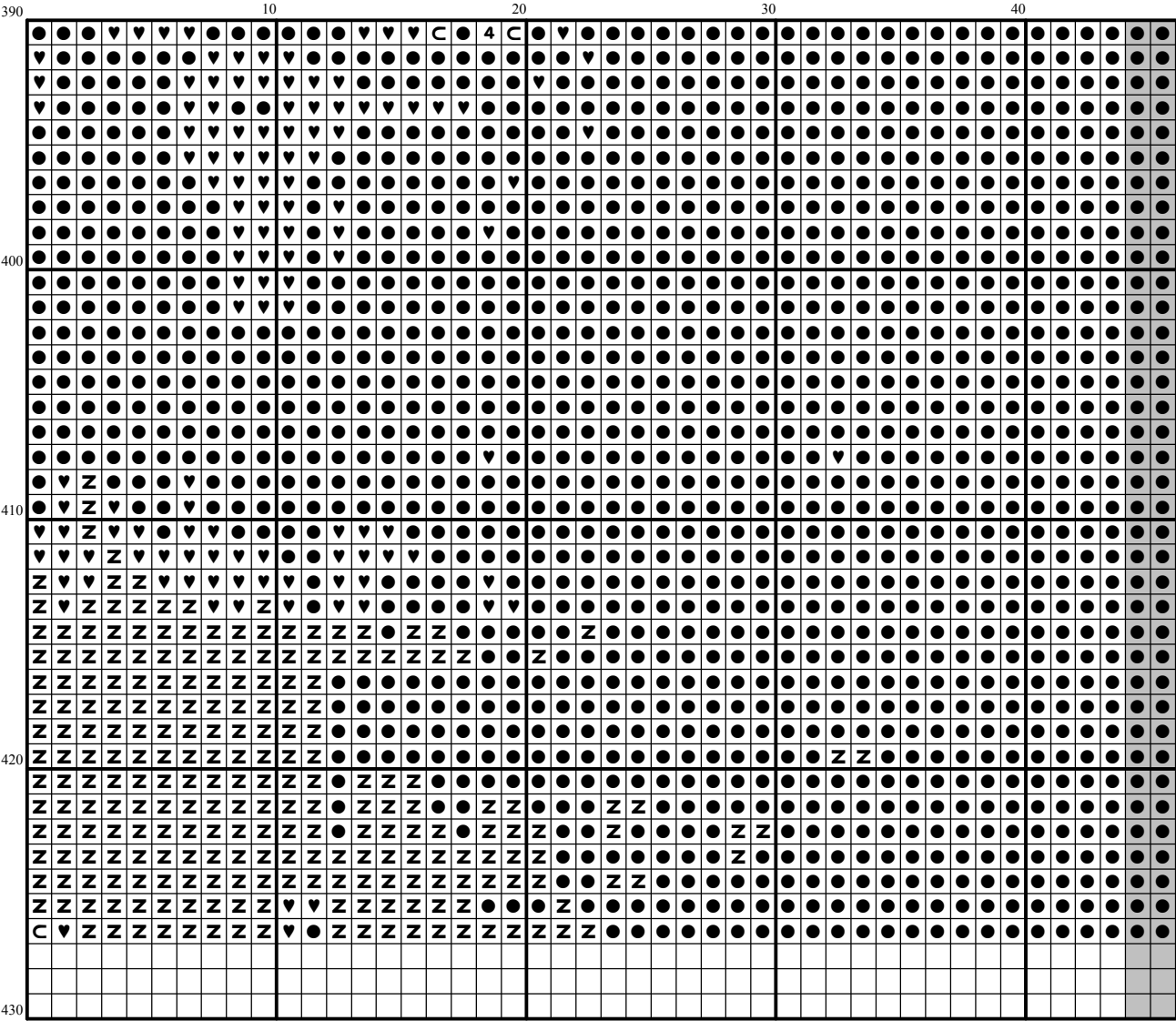


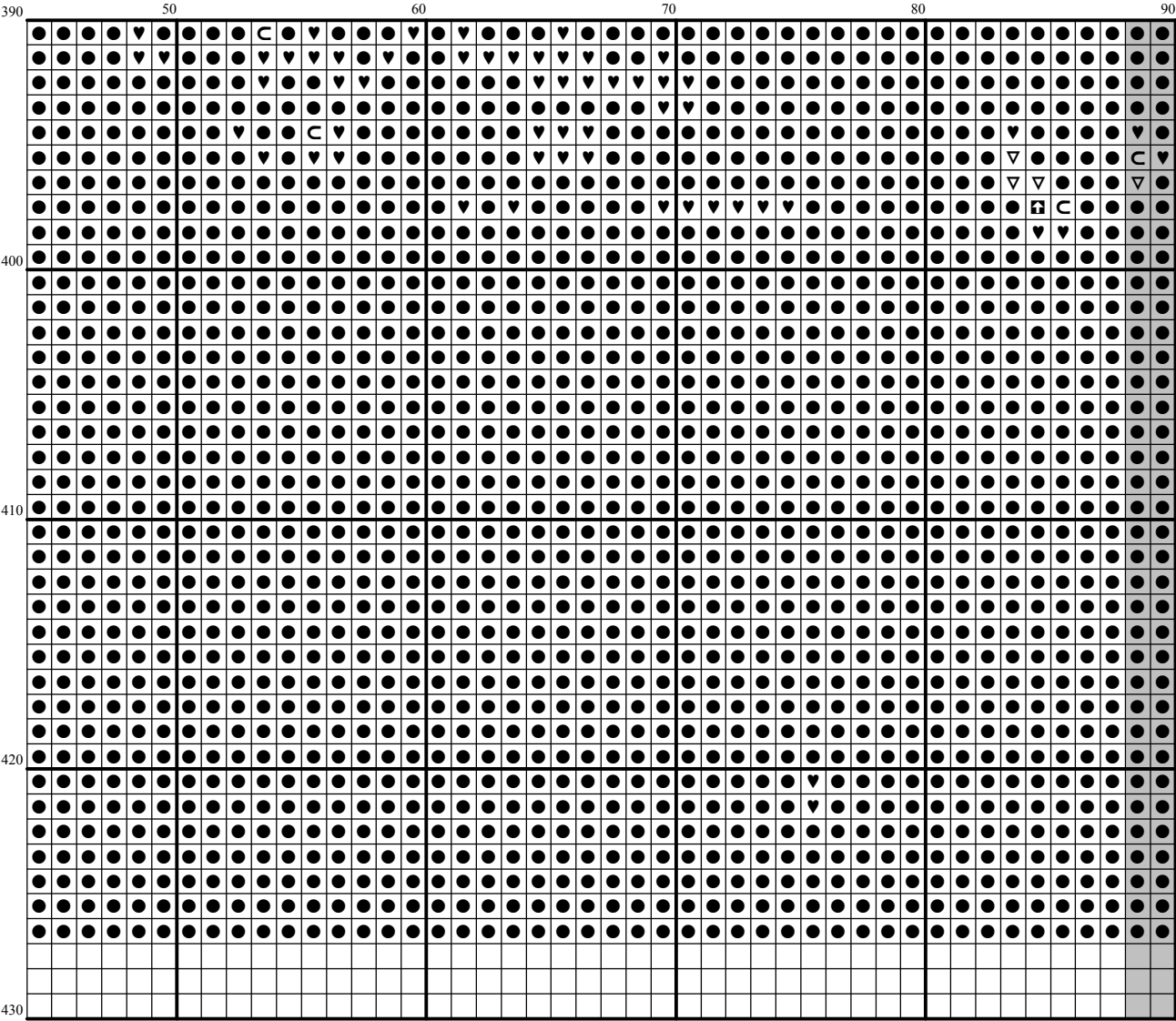




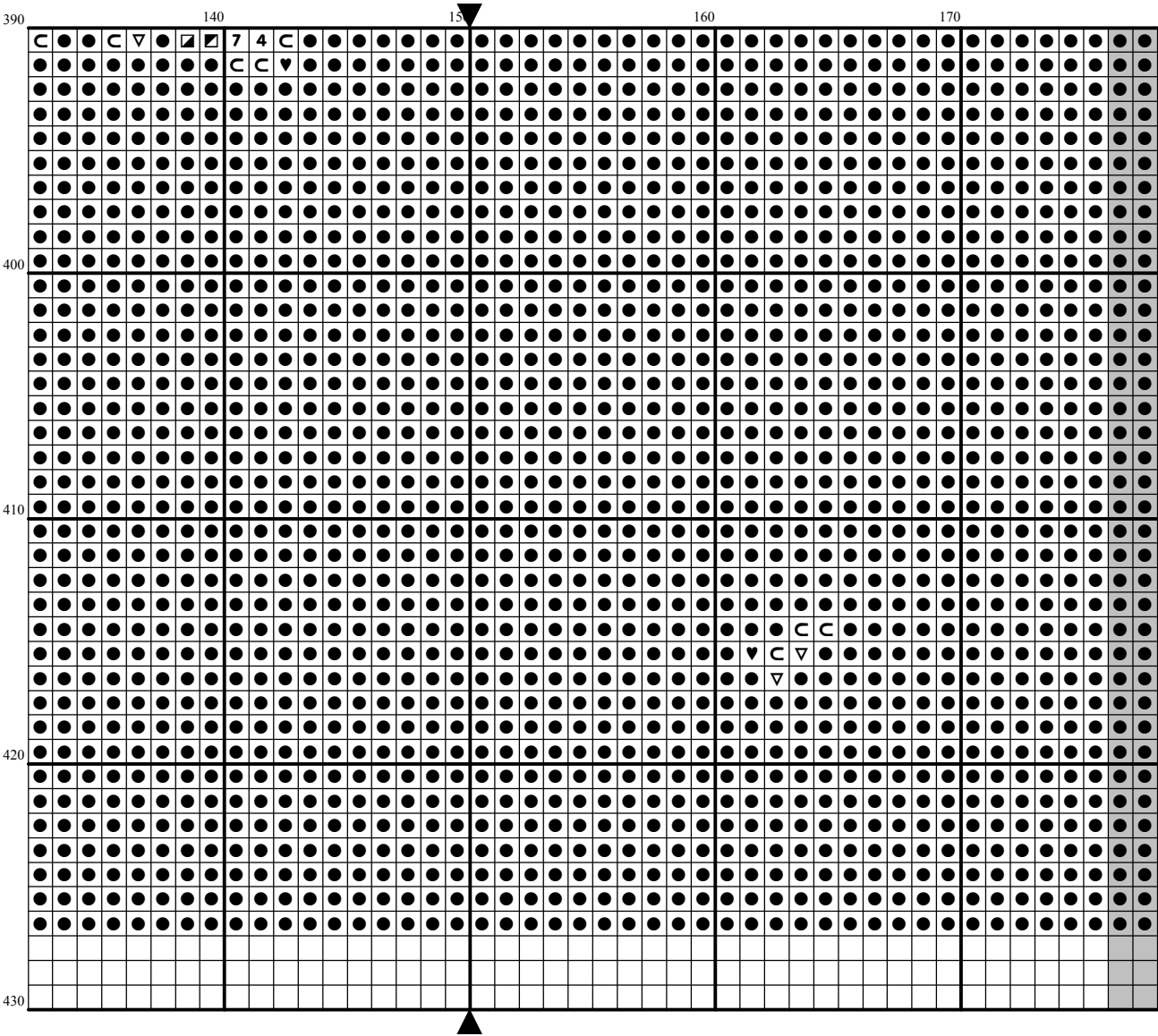


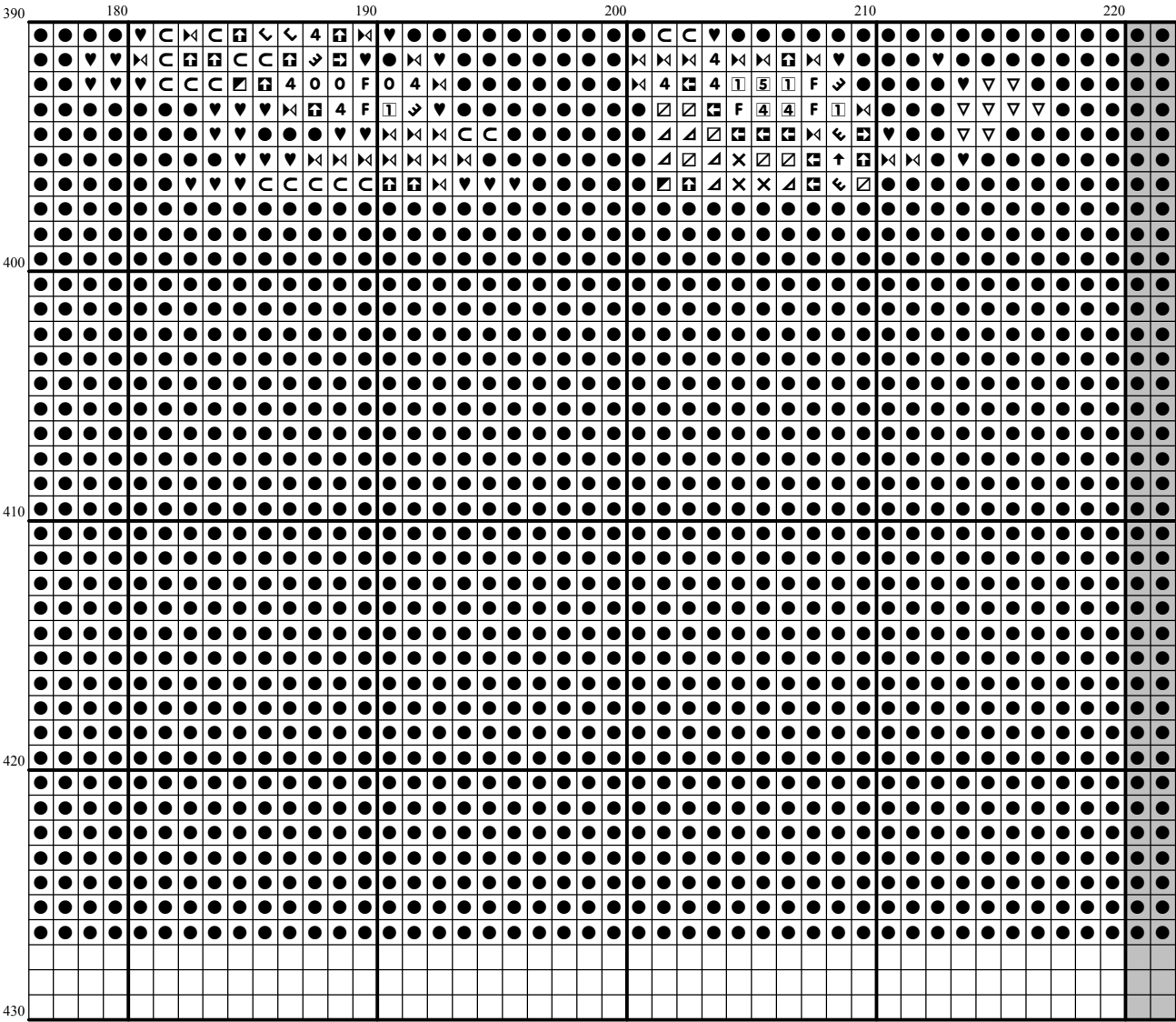


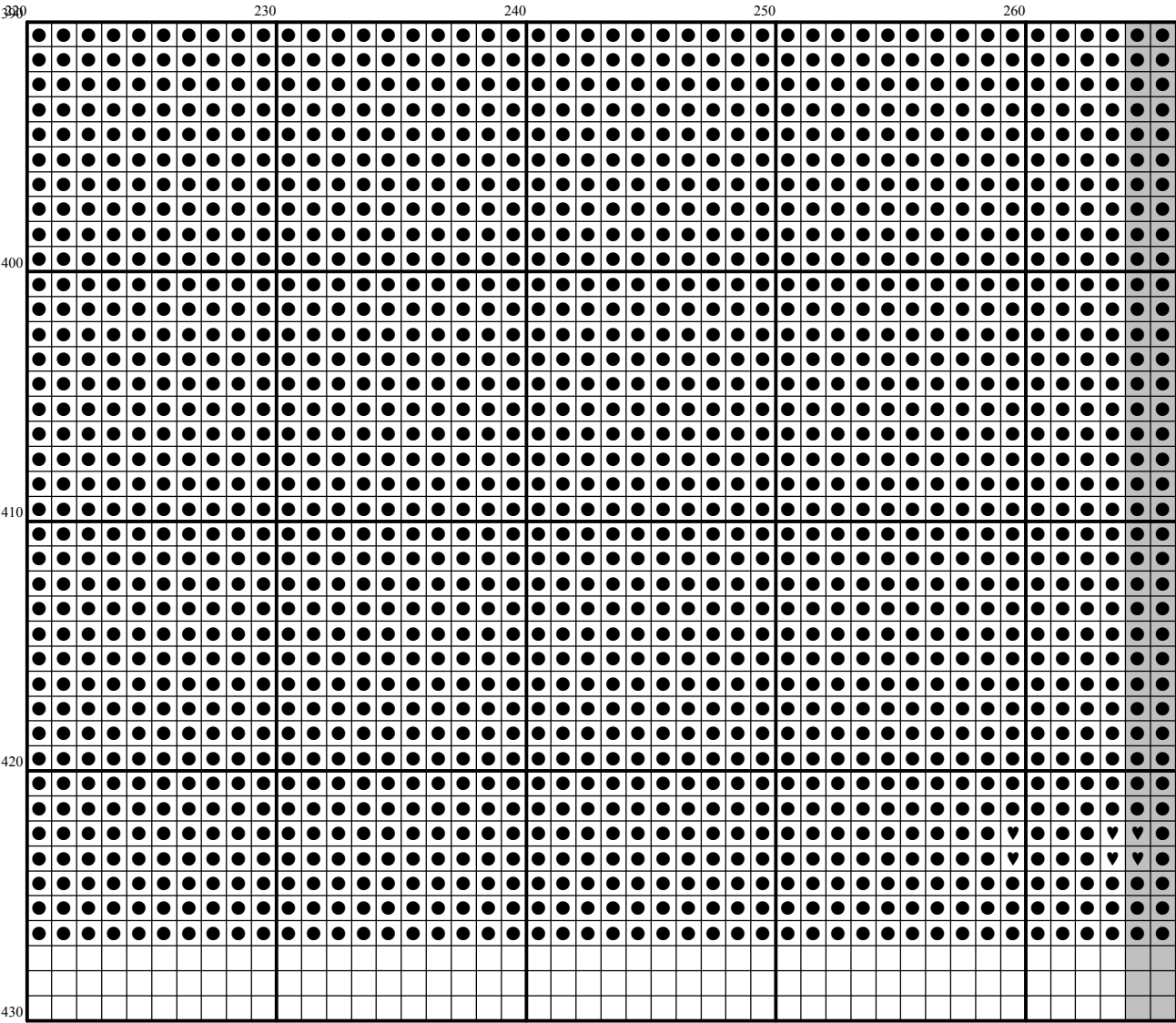


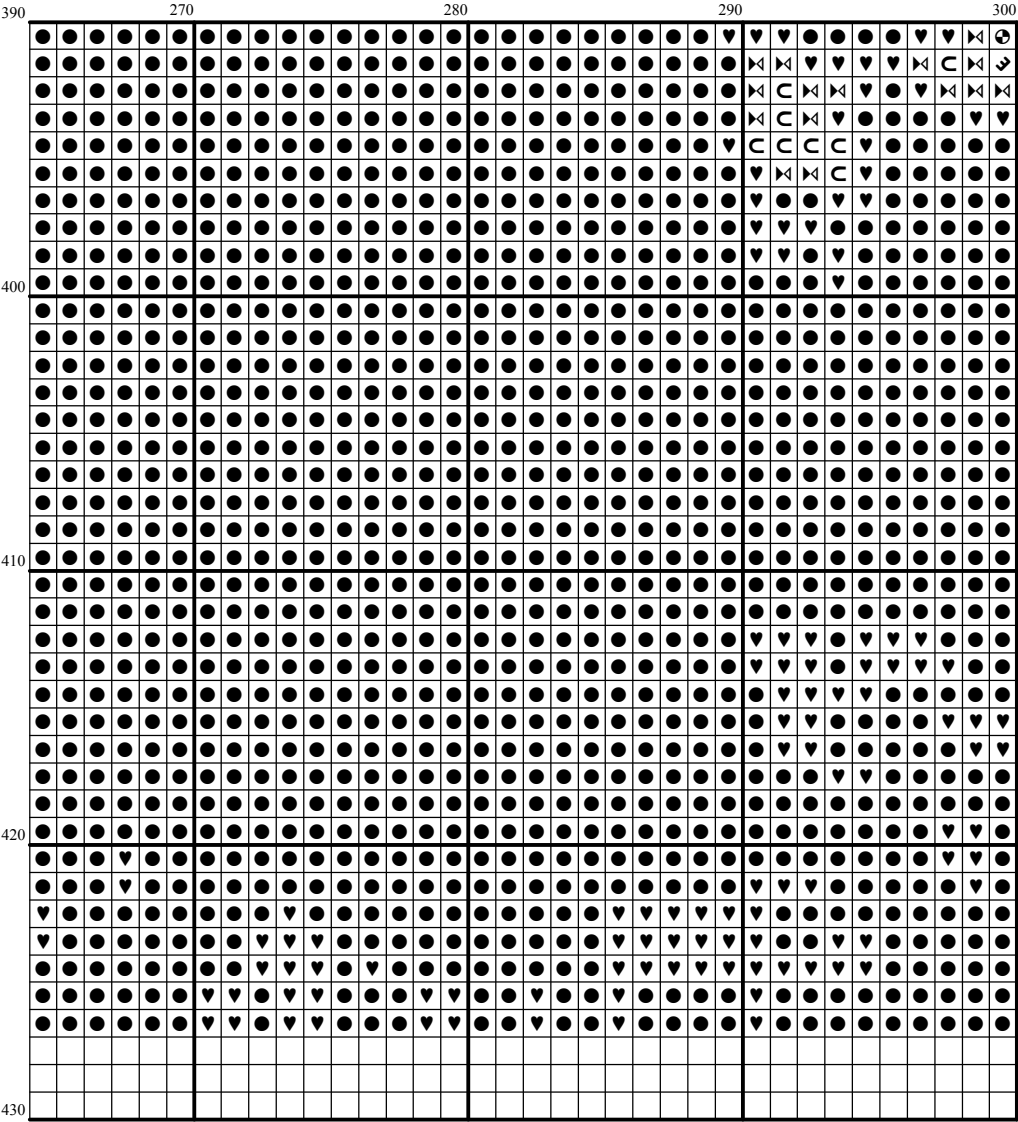


[illegible]









Instructions and Symbol Key for Design "FR274 Vase of Tulips"















Fabric: 14 count white Aida

Stitches: 300 x 427 **Size:** 21.43 x 30.50 inches or 54.43 x 77.47 cm

Colours: DMC

Use **2** strands of thread for cross stitch

Sym	No.	Colour Name	Sym	No.	Colour Name
Z	154	Prune rose	E	163	Eucalyptus green
⑥	167	Dark mustard brown	⬆	169	Pewter grey
④	301	Squirrel brown	●	310	Black
7	317	Steel grey	☒	319	Shadow green
⊖	320	Fern green	⊖	356	Medium terracotta
↑	367	Bay leaf green	J	368	Nile green
⊥	400	Brown	4	402	Pottery brown
⬇	407	Clay brown	▣	413	Iron grey
N	414	Lead grey	⊥	433	Chocolate brown
F	436	Teddy brown	5	437	Camel
▷	451	Shell pink grey	X	500	Ivy green
⊞	501	Pond green	P	502	Blue green
W	503	Thyme green	5	522	Trellis green
⓪	523	Ash green	A	524	Light grey green
4	535	Stone grey	●	561	Cypress tree green
Y	598	Lagoon turquoise	2	610	Dark golden brown
3	611	Sisal brown	6	640	Green grey
⊕	642	Earth grey	J	644	Light green grey
o	645	Dark steel grey	I	646	Platinum grey
L	647	Rock grey	9	712	Cream
⊕	720	Rust	6	738	Sahara cream
4	739	Dune cream	5	780	Chestnut tree brown
T	801	Mink brown	3	822	Cotton cream
▽	823	Blueberry blue	⚡	829	Dark green bronze
M	833	Brass	⊕	838	Dark wood
⊥	839	Root brown	V	842	Beige rope
⊞	844	Pepper black	△	890	Deep forest green
⊖	898	Teak brown	o	920	Ochre copper
7	921	Burnt ochre orange	⓪	922	Terracotta
▣	924	Dark pearl green	Y	926	Grey green
L	928	Light pearl grey	⋈	934	Algae green
⊞	935	Undergrowth green	⬇	937	Moss green
Y	945	Eggshell cream	W	950	Beige
E	966	Baby green	⓪	977	Caramel brown
⊞	986	Dark forest green	H	989	Fennel green
V	993	Light green	★	3021	Cliff grey
5	3023	Light platinum grey	⊕	3031	Dark Mocha brown
V	3032	Dark antique silver	X	3033	Antique silver
⬇	3051	Olive tree green	4	3052	Silver green
3	3053	Tweed green	⊕	3064	Cinnamon brown
5	3072	Pale pearl grey	1	3346	Hunter Green
⬇	3362	Fig tree green	F	3363	Herb green
N	3364	Sage green	♥	3371	Ebony
8	3756	Cloud blue	<	3768	Storm grey
7	3772	Rosy tan	o	3774	Pale desert sand
9	3776	Dark nutmeg brown	⋈	3781	Metal brown
H	3782	Gingerbread brown	⋈	3787	Wolf grey
C	3799	Anthracite grey	T	3810	Dark turquoise

	3811	Waterfall blue		3813	Light green
	3815	Eucalyptus Green		3816	Snake green
	3817	Polar tree green		3849	Green turquoise
	3856	Pale beechwood		3857	Dark red wine
	3860	Taupe mauve		3863	Otter brown
	3864	Light mocha brown		3865	Winter white
	3866	Garlic cream		ECRUT	ECRUT

This chart has been designed and printed with our best intentions of being without mistakes. However, the possibility of human error, printing mistakes or the variation of individual stitching does exist, and we regret that we cannot be responsible for this.

Note: The shaded blocks on the chart represent overlapping stitches.

Copyright © Classic Cross Stitch 2005 All rights reserved.